

**General Info**

Jakarta, IDN  
 S 06° 07.4' E106° 39.7' Mag Var: 0.0°W  
 Elevation: 34'

Public, Control Tower, IFR, No Fee, No Customs

Fuel: Jet A-1

Repairs: Major Airframe, Major Engine

Time Zone Info: GMT+7:00 no DST

**Runway Info**

Runway 07L-25R 11811' x 197' concrete

Runway 07R-25L 12008' x 197' concrete

Runway 07L (68.0°M) TDZE 29'

Lights: Edge, ALS, Centerline

Stopway Distance 197'

Runway 07R (68.0°M) TDZE 34'

Lights: Edge, ALS, Centerline

Right Traffic

Stopway Distance 197'

Runway 25L (248.0°M) TDZE 27'

Lights: Edge, ALS, Centerline

Stopway Distance 197'

Runway 25R (248.0°M) TDZE 21'

Lights: Edge, ALS, Centerline

Right Traffic

Stopway Distance 197'

**Communications Info**

ATIS **126.85**

Soekarno-Hatta Tower **118.75**

Soekarno-Hatta Tower **118.2** Secondary

Soekarno-Hatta Ground Control **121.6**

Soekarno-Hatta Clearance Delivery **121.95**

Jakarta Approach TMA **127.9**

Jakarta Approach TMA **119.75**

Jakarta Approach TMA **127.95**

Jakarta Arrival Control **135.9** Secondary

Jakarta Arrival Control **125.45**

Pabelokan Information **129.8** Flight Info Service

Jakarta Center **125.7**

Jakarta Center **120.9**

Jakarta Center **132.7**

Jakarta Center **132.1**

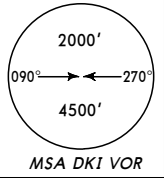
**Notebook Info**

**WIII/CGK**  
**SOEKARNO-HATTA INTL**

ATIS **126.85**

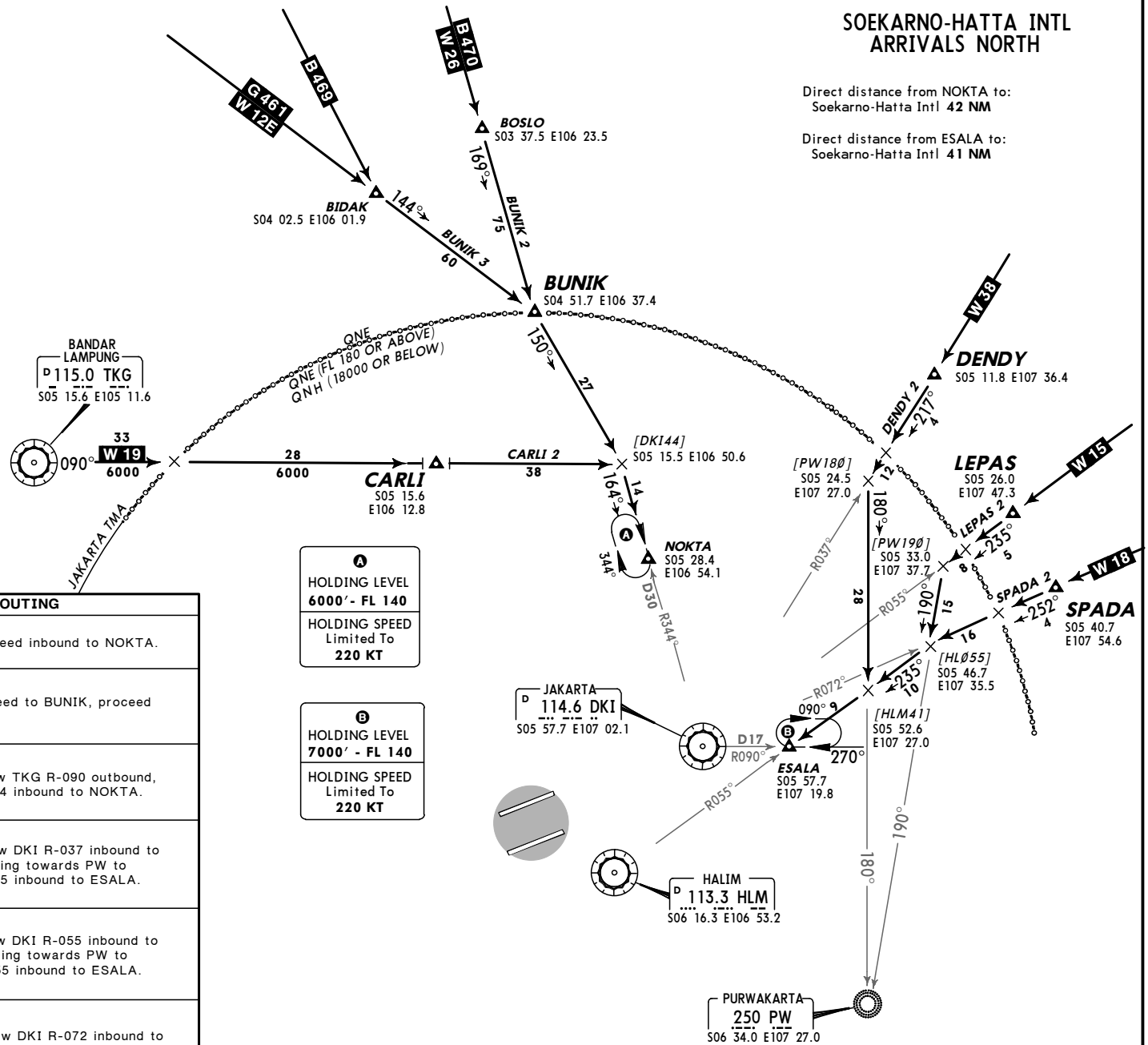
Apt Elev  
**34'**

Alt Set: hPa FOR QNE/QNH INFO SEE GRAPHIC



**SOEKARNO-HATTA INTL**  
**ARRIVALS NORTH**

Direct distance from NOKTA to:  
 Soekarno-Hatta Intl 42 NM  
 Direct distance from ESALA to:  
 Soekarno-Hatta Intl 41 NM



**A**  
 HOLDING LEVEL  
**6000' - FL 140**  
 HOLDING SPEED  
 Limited To  
**220 KT**

**B**  
 HOLDING LEVEL  
**7000' - FL 140**  
 HOLDING SPEED  
 Limited To  
**220 KT**

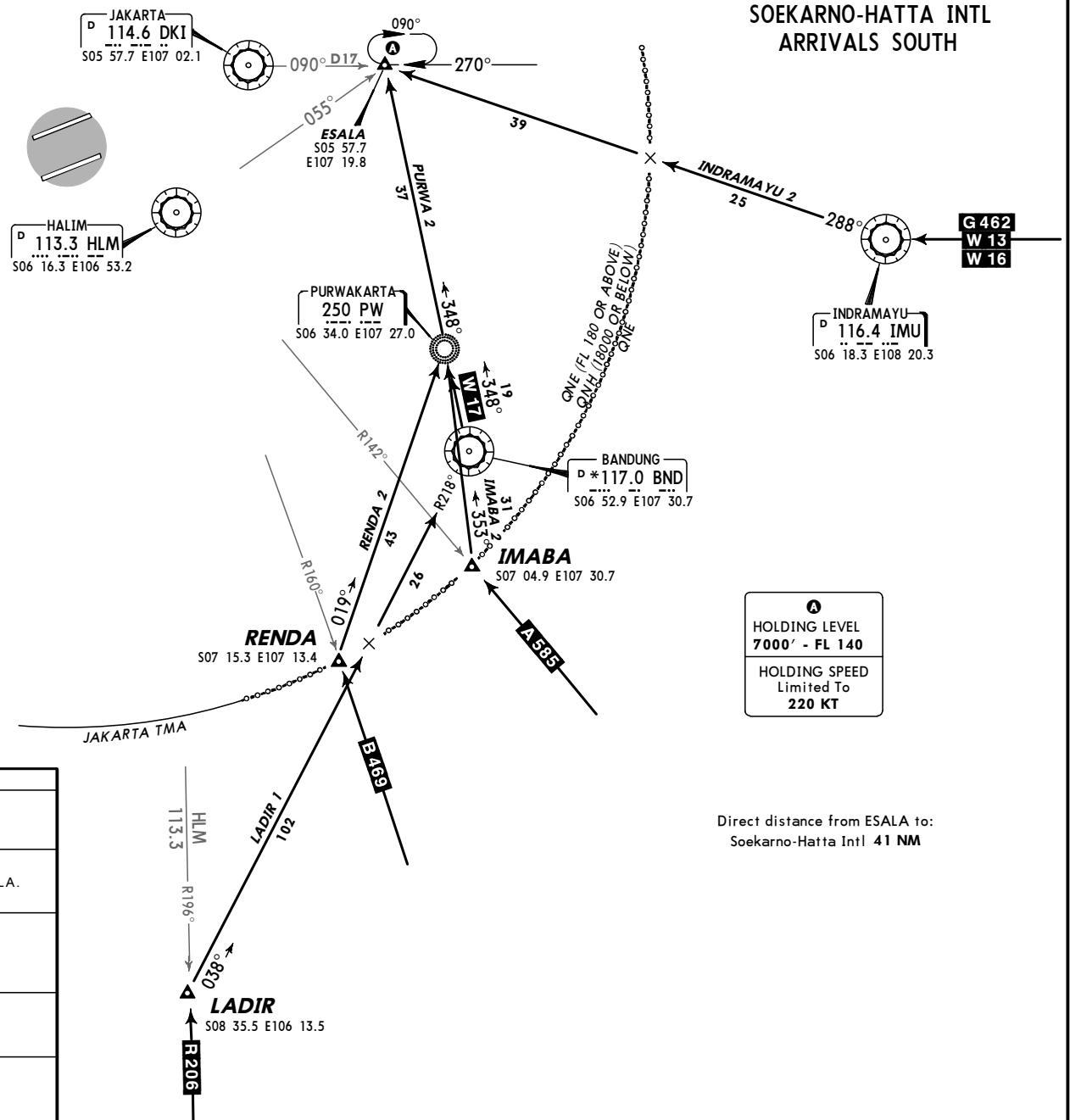
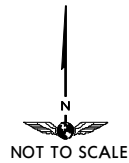
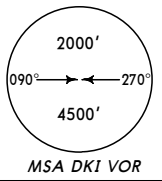
STAR	ROUTING
<b>BUNIK 2</b> (W-26, B-470)	After BOSLO, proceed inbound to NOKTA.
<b>BUNIK 3</b> (W-12E, B-469, G-461)	After BIDAQ, proceed to BUNIK, proceed inbound to NOKTA.
<b>CARLI 2</b> (W-19)	After CARLI, follow TKG R-090 outbound, intercept DK1 R-344 inbound to NOKTA.
<b>DENDY 2</b> (W-38)	From DENDY, follow DK1 R-037 inbound to intercept 180° bearing towards PW to intercept HLM R-055 inbound to ESALA.
<b>LEPAS 2</b> (W-15)	From LEPAS, follow DK1 R-055 inbound to intercept 190° bearing towards PW to intercept HLM R-055 inbound to ESALA.
<b>SPADA 2</b> (W-18)	After SPADA, follow DK1 R-072 inbound to intercept HLM R-055 inbound to ESALA.

CHANGES: QNE/QNH, MSA.

ATIS 126.85

Apt Elev  
 34'

Alt Set: hPa FOR QNE/QNH INFO SEE GRAPHIC



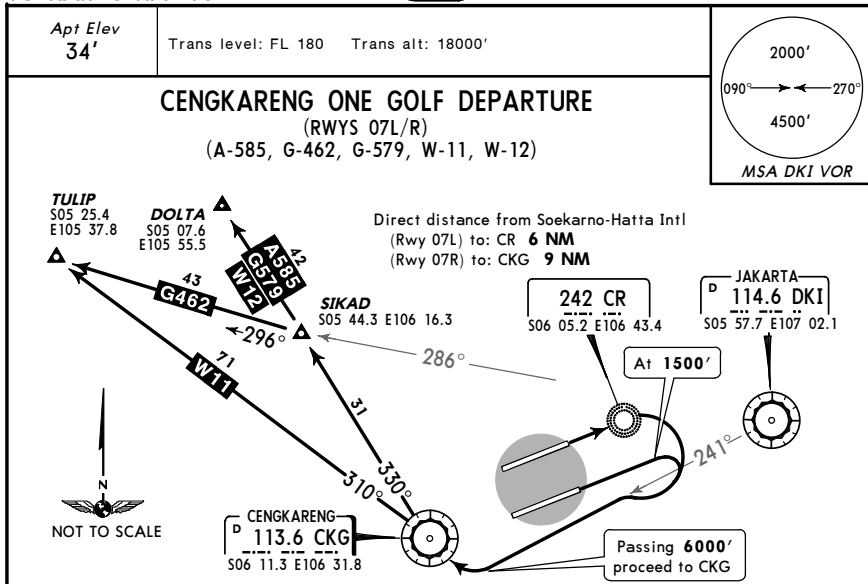
STAR	ROUTING
<b>IMABA 2 (A-585)</b>	From IMABA, follow 353° bearing to PW. Depart on a 348° bearing from PW to ESALA.
<b>INDRAMAYU 2 (W-13, W-16, G-462)</b>	From IMU, follow IMU R-288 outbound to ESALA.
<b>LADIR 1 (R-206)</b>	From LADIR, follow BND R-218 inbound, then proceed to PW. Depart on a 348° bearing from PW to ESALA.
<b>PURWA 2 (W-17)</b>	From PW, follow 348° bearing to ESALA.
<b>REND A 2 (B-469)</b>	From REND A, follow 019° bearing to PW. Depart on a 348° bearing from PW to ESALA.

WIII/CGK  
 SOEKARNO-HATTA INTL

JEPPESEN  
 5 MAY 06 (10-3)

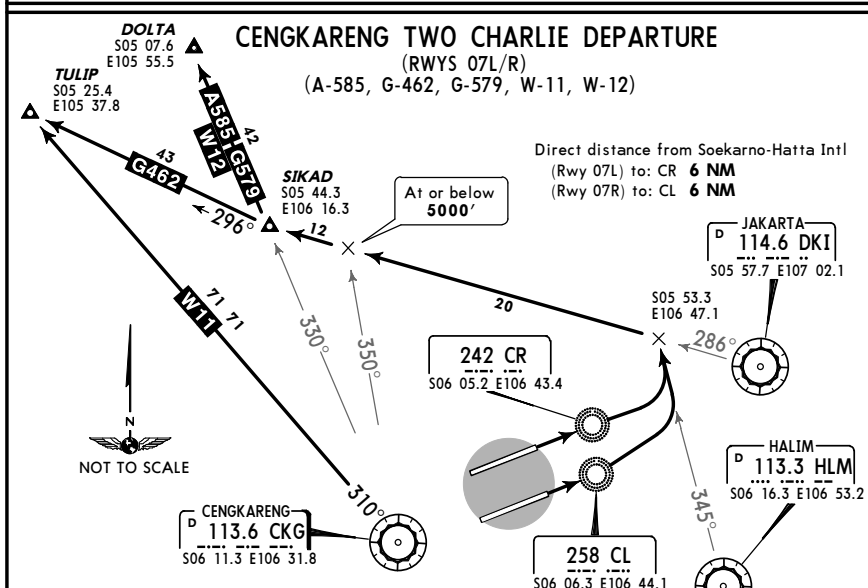
JAKARTA, INDONESIA

SID



RWY	INITIAL CLIMB
07L	From over CR, turn RIGHT to intercept DK1 R-241 outbound until passing 6000'.
07R	At 1500', turn RIGHT to intercept DK1 R-241 outbound until passing 6000'.

**ROUTING**  
 Proceed to CKG to join assigned route.



RWY	INITIAL CLIMB
07L	From over CR proceed to DK1 until intercepting HLM R-345.
07R	From over CL proceed to DK1 until intercepting HLM R-345.

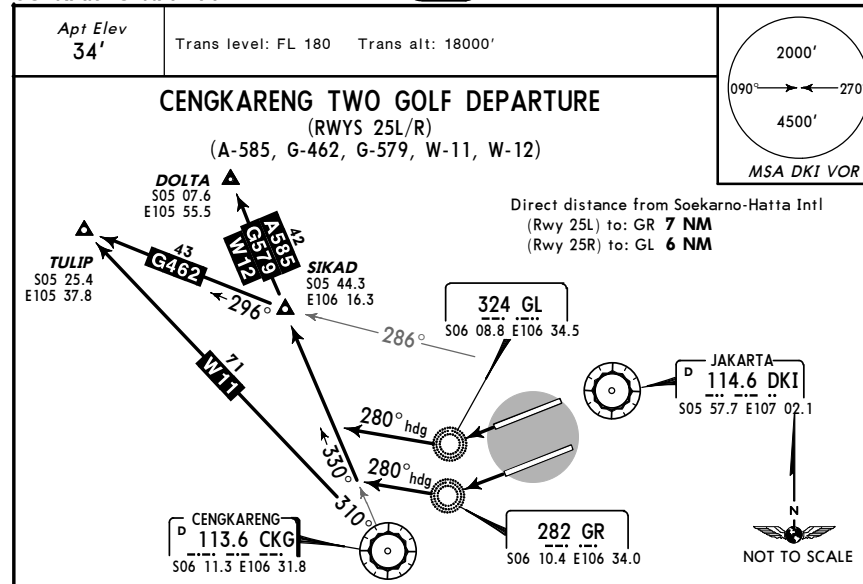
**ROUTING**  
 Turn LEFT proceed to SIKAD via DK1 R-286 to join assigned ATS routes.

WIII/CGK  
 SOEKARNO-HATTA INTL

JEPPESEN  
 5 MAY 06 (10-3A)

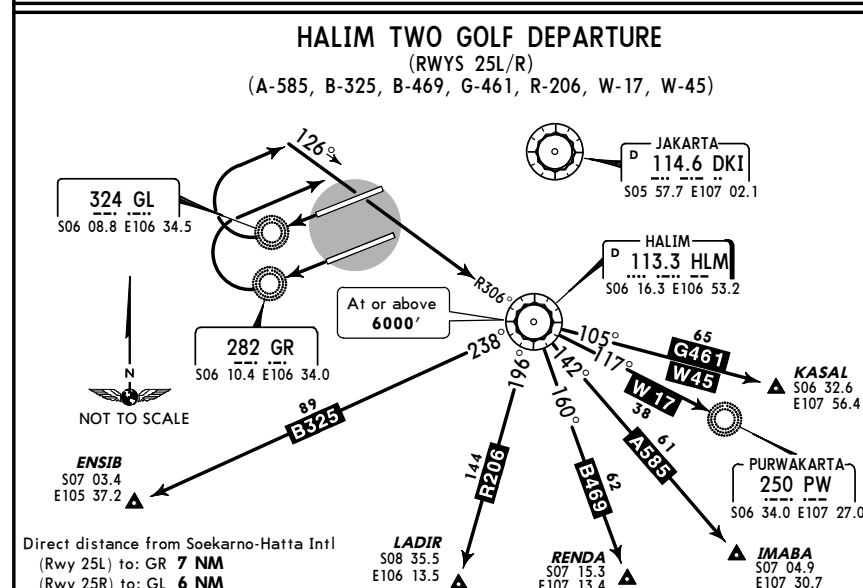
JAKARTA, INDONESIA

SID



RWY	INITIAL CLIMB
25L	From over GR turn RIGHT heading 280°.
25R	From over GL turn RIGHT heading 280°.

**ROUTING**  
 Intercept CKG R-330, proceed to SIKAD, then join assigned ATS routes.



RWY	INITIAL CLIMB
25L	From over GR turn RIGHT to intercept HLM R-306 to HLM.
25R	From over GL turn RIGHT to intercept HLM R-306 to HLM.

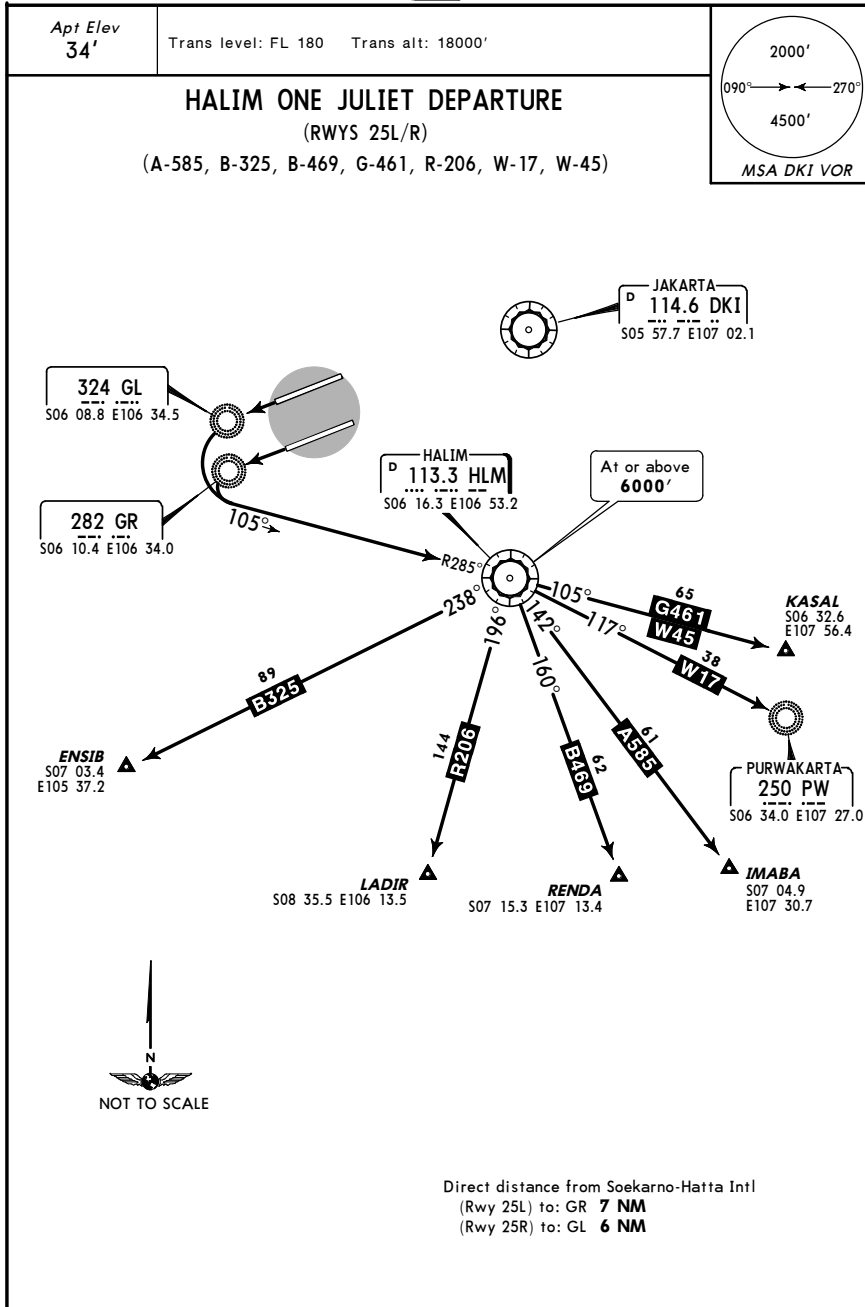
**ROUTING**  
 Depart HLM to join assigned ATS routes.

**WIII/CGK**  
 SOEKARNO-HATTA INTL

**JEPPesen**  
 5 MAY 06 (10-3B)

**JAKARTA, INDONESIA**

**SID**



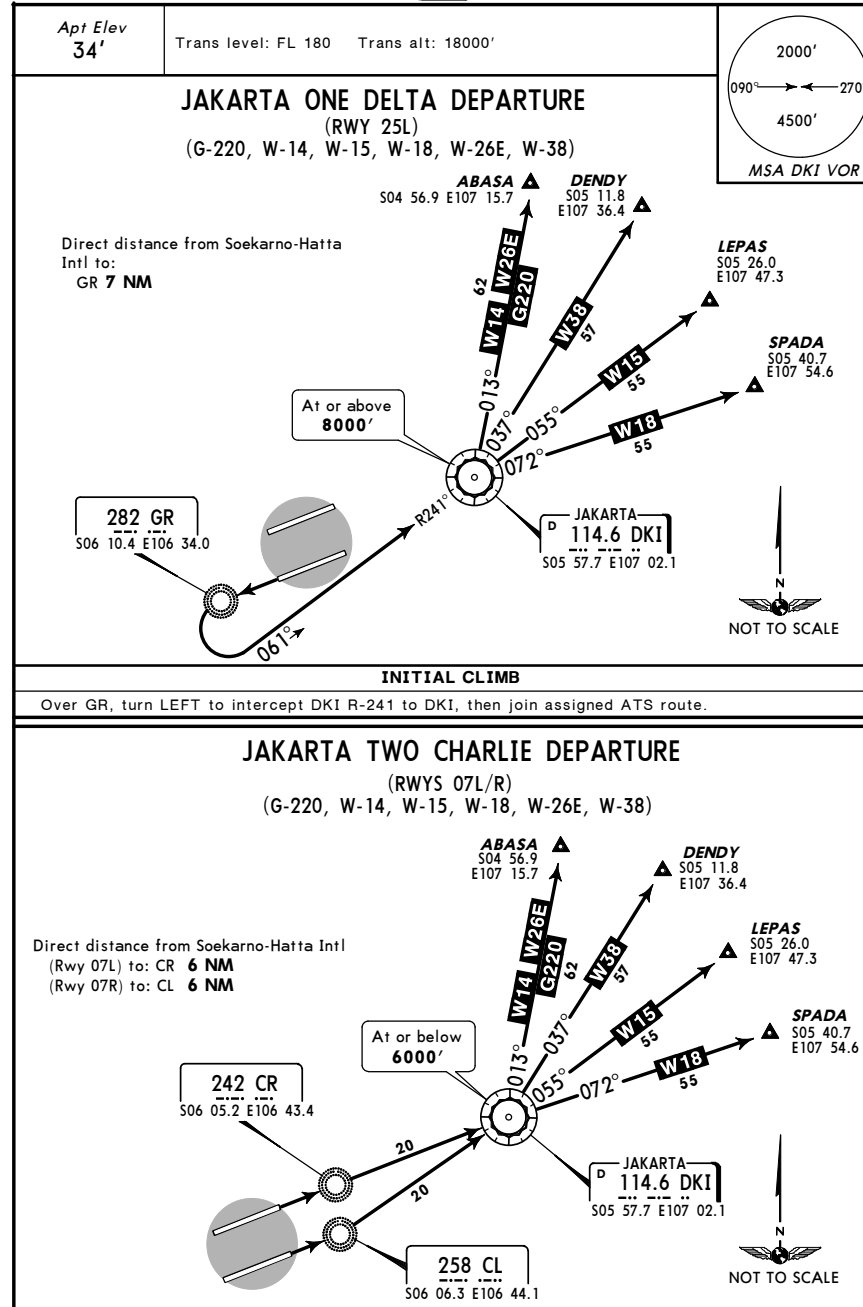
RWY	INITIAL CLIMB
25L	From over GR turn LEFT to intercept HLM R-285 to HLM.
25R	From over GL turn LEFT to intercept HLM R-285 to HLM.
ROUTING	
Depart HLM to join assigned ATS route.	

**WIII/CGK**  
 SOEKARNO-HATTA INTL

**JEPPesen**  
 5 MAY 06 (10-3C)

**JAKARTA, INDONESIA**

**SID**



RWY	INITIAL CLIMB
07L	From over CR proceed to DKI.
07R	From over CL proceed to DKI.
ROUTING	
Depart DKI to join assigned ATS route.	

**WIII/CGK**  
 SOEKARNO-HATTA INTL

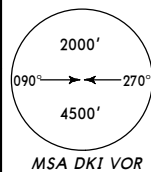
**JEPPESEN**  
 5 MAY 06 (10-3D)

**JAKARTA, INDONESIA**

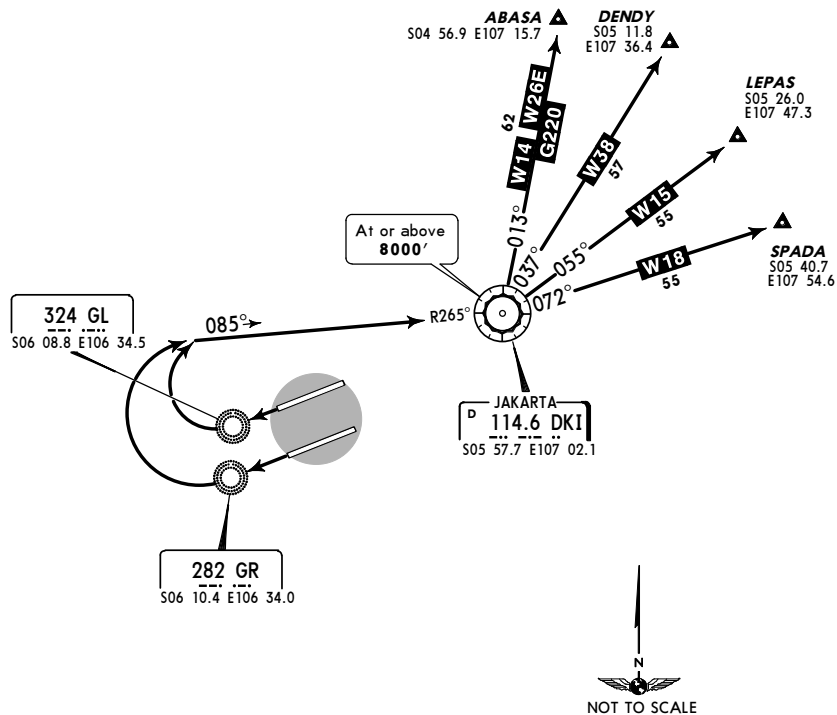
**SID**

Apt Elev  
 34'

Trans level: FL 180 Trans alt: 18000'



**JAKARTA TWO GOLF DEPARTURE**  
 (RWYS 25L/R)  
 (G-220, W-14, W-15, W-18, W-26E, W-38)



Direct distance from Soekarno-Hatta Intl  
 (Rwy 25L) to: GR **7 NM**  
 (Rwy 25R) to: GL **6 NM**

RWY	INITIAL CLIMB
25L	From over GR turn RIGHT to intercept DKI R-265 to DKI.
25R	From over GL turn RIGHT to intercept DKI R-265 to DKI.
ROUTING	
Depart DKI to join assigned ATS routes.	

**WIII/CGK**  
 SOEKARNO-HATTA INTL

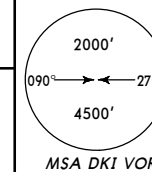
**JEPPESEN**  
 5 MAY 06 (10-3E)

**JAKARTA, INDONESIA**

**SID**

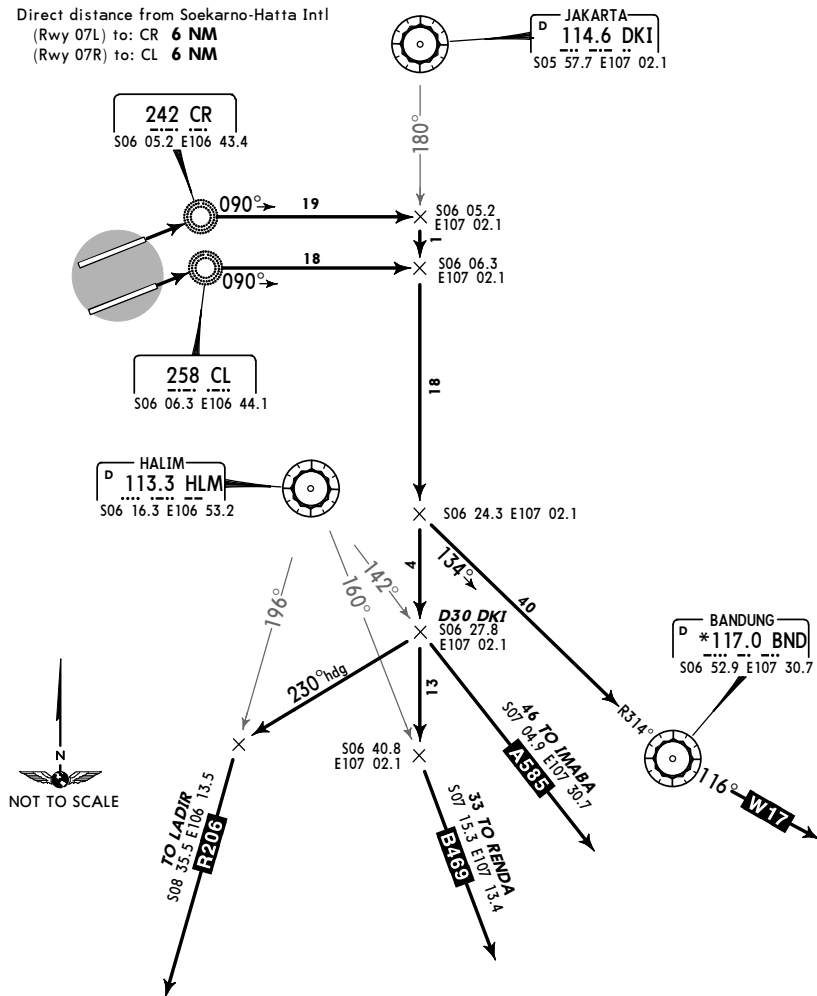
Apt Elev  
 34'

Trans level: FL 180 Trans alt: 18000'



**KARAWANG ONE DELTA DEPARTURE**  
 (RWYS 07L/R)  
 (A-585, B-469, R-206, W-17)

Direct distance from Soekarno-Hatta Intl  
 (Rwy 07L) to: CR **6 NM**  
 (Rwy 07R) to: CL **6 NM**



RWY	INITIAL CLIMB
07L	From over CR turn RIGHT to a 090° bearing from CR.
07R	From over CL turn RIGHT to a 090° bearing from CL.
ROUTING	
Intercept and proceed on DKI R-180 to join assigned ATS route. <b>For A-585:</b> Intercept HLM R-142. <b>For B-469:</b> Intercept HLM R-160. <b>For R-206:</b> At D30 DKI turn RIGHT heading 230° to intercept HLM R-196. <b>For W-17:</b> Intercept BND R-314.	

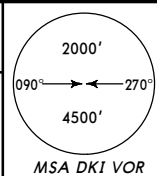
WIII/CGK  
 SOEKARNO-HATTA INTL

**JEPPESSEN**  
 5 MAY 06 (10-3F)

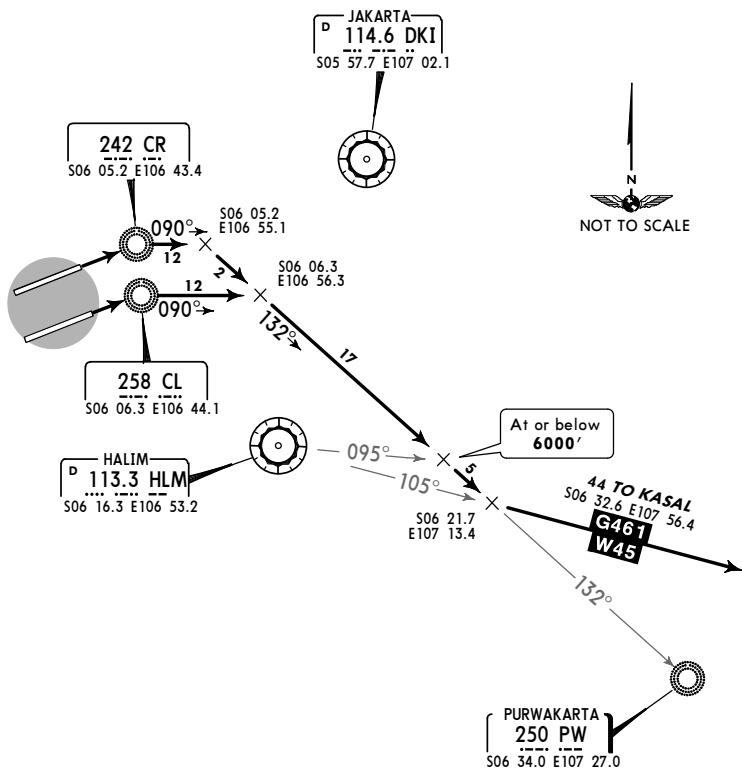
**JAKARTA, INDONESIA**  
**SID**

Apt Elev  
 34'

Trans level: FL 180 Trans alt: 18000'



**PURWAKARTA TWO CHARLIE DEPARTURE**  
 (RWYS 07L/R)  
 (G-461, W-45)



Direct distance from Soekarno-Hatta Intl  
 (Rwy 07L) to: CR **6 NM**  
 (Rwy 07R) to: CL **6 NM**

RWY	INITIAL CLIMB
07L	From over CR turn RIGHT to a 090° bearing from CR.
07R	From over CL turn RIGHT to a 090° bearing from CL.
ROUTING	
Intercept and proceed on the 132° bearing to PW, then join airways W-45 or G-461.	

WIII

**JEPPESSEN**  
 21 JUN 02 (10-6)

**TAXI**  
**JAKARTA, INDONESIA**  
 SOEKARNO-HATTA INTL

**Landing Runway 07L**

Exit	Route No.	TAXI ROUTING
N2	ALPHA 6	N2 - NP2 - WC1 - SP2 - SC3 - APRON A. Exit N2 turn right NP2, turn left WC1, turn left SP2, turn left SC3 to Apron A.
N1		N1 - NP2 - WC1 - SP2 - SC3 - APRON A. Exit N1 turn right NP2, turn left WC1, turn left SP2, turn left SC3 to Apron A.
N2	BRAVO 10	N2 - NP2 - WC1 - SP2 - SCX - APRON B. Exit N2 turn right NP2, turn left WC1, turn left SP2, turn left SCX to Apron B.
N1		N1 - NP2 - WC1 - SP2 - SCX - APRON B. Exit N1 turn right NP2, turn left WC1, turn left SP2, turn left SCX to Apron B.
N2	BRAVO 11	N2 - NP2 - WC1 - SP2 - SC4 - APRON B. Exit N2 turn right NP2, turn left WC1, turn left SP2, turn left SC4 to Apron B.
N1		N1 - NP2 - WC1 - SP2 - SC4 - APRON B. Exit N1 turn right NP2, turn left WC1, turn left SP2, turn left SC4 to Apron B.
N2	CHARLIE 11	N2 - NP2 - WC1 - SPW - APRON C. Exit N2 turn right NP2, turn left WC1, turn left SPW to Apron C.
N1		N1 - NP2 - WC1 - SPW - APRON C. Exit N1 turn right NP2, turn left WC1, turn left SPW to Apron C.
N2	CHARLIE 12	N2 - NP2 - WC1 - SP2 - SC5 - APRON C. Exit N2 turn right NP2, turn left WC1, turn left SP2, turn left SC5 to Apron C.
N1		N1 - NP2 - WC1 - SP2 - SC5 - APRON C. Exit N1 turn right NP2, turn left WC1, turn left SP2, turn left SC5 to Apron C.
N2	DELTA 4	N2 - NP2 - NCZ - APRON D. Exit N2 turn right NP2, turn left NCZ to Apron D.
N1		N1 - NP2 - NCZ - APRON D. Exit N1 turn right NP2, turn left NCZ to Apron D.
N2	DELTA 5	N2 - NP2 - WC1 - NPW - APRON D. Exit N2 turn right NP2, turn left WC1, turn left NPW to Apron D.
N1		N1 - NP2 - WC1 - NPW - APRON D. Exit N1 turn right NP2, turn left WC1, turn left NPW to Apron D.
N2	ECHO 4	N2 - NP2 - NC4 - APRON D/E. Exit N2 turn right NP2, turn left NC4 to Apron E.
N1		N1 - NP2 - NC4 - APRON D/E. Exit N1 turn right NP2, turn left NC4 to Apron E.
N2	ECHO 5	N2 - NP2 - NCY - APRON E/F. Exit N2 turn right NP2, turn left NCY to Apron E.
N1		N1 - NP2 - NCY - APRON E/F. Exit N1 turn right NP2, turn left NCY to Apron E.
N2	FOXTROT 3	N2 - NP2 - NC3 - APRON E/F. Exit N2 turn right NP2, turn left NC3 to Apron F.
N1		N1 - NP2 - NC3 - APRON E/F. Exit N1 turn right NP2, turn left NC3 to Apron F.

WIII

**JEPPESSEN**  
21 JUN 02 (10-6A)

**TAXI**  
JAKARTA, INDONESIA  
SOEKARNO-HATTA INTL

**Landing Runway 25R**

Exit	Route No.	TAXI ROUTING
N3	ALPHA 4	N3 - NP2 - WC1 - SP2 - SC3 - APRON A. Exit N3 turn right NP2, turn left WC1, turn left SP2, turn left SC3 to Apron A.
N4		N4 - NP2 - WC1 - SP2 - SC3 - APRON A. Exit N4 turn right NP2, turn left WC1, turn left SP2, turn left SC3 to Apron A.
N6		N6 - NP2 - WC1 - SP2 - SC3 - APRON A. Exit N6 turn left NP2, turn right WC1, turn left SP2, turn left SC3 to Apron A.
N5	ALPHA 5	N5 - WC1 - SP2 - SC3 - APRON A. Exit N5 entering WC1, turn left SP2, turn left SC3 to Apron A.
N3	BRAVO 6	N3 - NP2 - WC1 - SP2 - SC4 - APRON B. Exit N3 turn right NP2, turn left WC1, turn left SP2, turn left SC4 to Apron B.
N4		N4 - NP2 - WC1 - SP2 - SC4 - APRON B. Exit N4 turn right NP2, turn left WC1, turn left SP2, turn left SC4 to Apron B.
N6		N6 - NP2 - WC1 - SP2 - SC4 - APRON B. Exit N6 turn left NP2, turn right WC1, turn left SP2, turn left SC4 to Apron B.
N3	BRAVO 7	N3 - NP2 - WC1 - SP2 - SCX - APRON A/B. Exit N3 turn right NP2, turn left WC1, turn left SP2, turn left SCX to Apron B.
N4		N4 - NP2 - WC1 - SP2 - SCX - APRON A/B. Exit N4 turn right NP2, turn left WC1, turn left SP2, turn left SCX to Apron B.
N6		N6 - NP2 - WC1 - SP2 - SCX - APRON A/B. Exit N6 turn left NP2, turn right WC1, turn left SP2, turn left SCX to Apron B.
N5	BRAVO 8	N5 - WC1 - SP2 - SC4 - APRON B. Exit N5 entering WC1, turn left SP2, turn left SC4 to Apron B.
N5	BRAVO 9	N5 - WC1 - SP2 - SCX - APRON A/B. Exit N5 entering WC1, turn left SP2, turn left SCX to Apron B.
N3	CHARLIE 7	N3 - NP2 - WC1 - SPW - APRON C. Exit N3 turn right NP2, turn left WC1, turn left SPW to Apron C.
N4		N4 - NP2 - WC1 - SPW - APRON C. Exit N4 turn right NP2, turn left WC1, turn left SPW to Apron C.
N6		N6 - NP2 - WC1 - SPW - APRON C. Exit N6 turn left NP2, turn right WC1, turn left SPW to Apron C.
N3	CHARLIE 8	N3 - NP2 - WC1 - SP2 - SC5 - APRON C. Exit N3 turn right NP2, turn left WC1, turn left SP2, turn left SC5 to Apron C.
N4		N4 - NP2 - WC1 - SP2 - SC5 - APRON B/C. Exit N4 turn right NP2, turn left WC1, turn left SP2, turn left SC5 to Apron C.
N6		N6 - NP2 - WC1 - SP2 - SC5 - APRON B/C. Exit N6 turn left NP2, turn right WC1, turn left SP2, turn left SC5 to Apron C.
N5	CHARLIE 9	N5 - WC1 - SPW - APRON C. Exit N5 join WC1, turn left SPW to Apron C.
N5	CHARLIE 10	N5 - WC1 - SP2 - SC5 - APRON B/C. Exit N5 join WC1, turn left SP2, turn left SC5 to Apron C.

WIII

**JEPPESSEN**  
21 JUN 02 (10-6B)

**TAXI**  
JAKARTA, INDONESIA  
SOEKARNO-HATTA INTL

**Landing Runway 25R continued**

Exit	Route No.	TAXI ROUTING
N3	DELTA 1	N3 - NP2 - NCZ - APRON D. Exit N3 turn right NP2, turn left NCZ to Apron D.
N4		N4 - NP2 - NCZ - APRON D. Exit N4 turn right NP2, turn left NCZ to Apron D.
N5		N5 - NP2 - NCZ - APRON D. Exit N5 turn left NP2, turn right NCZ to Apron D.
N6		N6 - NP2 - NCZ - APRON D. Exit N6 turn left NP2, turn right NCZ to Apron D.
N3	DELTA 2	N3 - NP2 - WC1 - NPW - APRON D. Exit N3 turn right NP2, turn left WC1, turn left NPW to Apron D.
N4		N4 - NP2 - WC1 - NPW - APRON D. Exit N4 turn right NP2, turn left WC1, turn left NPW to Apron D.
N6		N6 - NP2 - WC1 - NPW - APRON D. Exit N6 turn left NP2, turn right WC1, turn left NPW to Apron D.
N5	DELTA 3	N5 - WC1 - NPW - APRON D. Exit N5 join WC1, turn left NPW to Apron D.
N4	ECHO 1	N4 - NC4 - APRON D/E. Exit N4 join NC4 to Apron E.
N3	ECHO 2	N3 - NP2 - NCY - APRON E/F. Exit N3 turn right NP2, turn left NCY to Apron E.
N4		N4 - NP2 - NCY - APRON E/F. Exit N4 turn left NP2, turn right NCY to Apron E.
N5		N5 - NP2 - NCY - APRON E/F. Exit N5 turn left NP2, turn right NCY to Apron E.
N6		N6 - NP2 - NCY - APRON E/F. Exit N6 turn left NP2, turn right NCY to Apron E.
N3	ECHO 3	N3 - NP2 - NC4 - APRON D/E. Exit N3 turn right NP2, turn left NC4 to Apron E.
N5		N5 - NP2 - NC4 - APRON D/E. Exit N5 turn left NP2, turn right NC4 to Apron E.
N6		N6 - NP2 - NC4 - APRON D/E. Exit N6 turn left NP2, turn right NC4 to Apron E.
N3	FOXTROT 1	N3 - NC3 - APRON F. Exit N3 join NC3 to Apron F.
N4	FOXTROT 2	N4 - NP2 - NC3 - APRON F. Exit N4 turn left NP2, turn right NC3 to Apron F.
N5		N5 - NP2 - NC3 - APRON F. Exit N5 turn left NP2, turn right NC3 to Apron F.
N6		N6 - NP2 - NC3 - APRON F. Exit N6 turn left NP2, turn right NC3 to Apron F.



WIII

**JEPPESSEN**  
21 JUN 02 (10-6C)

**TAXI**  
JAKARTA, INDONESIA  
SOEKARNO-HATTA INTL

**Landing Runway 07R**

Exit	Route No.	TAXI ROUTING
S3	ALPHA 2	S3 - SC3 - APRON A. Exit S3 direct SC3 to Apron A.
S2	ALPHA 3	S2 - SP2 - SC3 - APRON A. Exit S2 turn left SP2, turn right SC3 to Apron A.
S1		S1 - SP2 - SC3 - APRON A. Exit S1 turn left SP2, turn right SC3 to Apron A.
S3	BRAVO 4	S3 - SP2 - SCX - APRON A/B. Exit S3 turn left SP2, turn right SCX to Apron B.
S2		S2 - SP2 - SCX - APRON A/B. Exit S2 turn left SP2, turn right SCX to Apron B.
S1		S1 - SP2 - SCX - APRON A/B. Exit S1 turn left SP2, turn right SCX to Apron B.
S3	BRAVO 5	S3 - SP2 - SC4 - APRON B. Exit S3 turn left SP2, turn right SC4 to Apron B.
S2		S2 - SP2 - SC4 - APRON B. Exit S2 turn left SP2, turn right SC4 to Apron B.
S1		S1 - SP2 - SC4 - APRON B. Exit S1 turn left SP2, turn right SC4 to Apron B.
S3	CHARLIE 5	S3 - SP2 - SC5 - APRON C. Exit S3 turn left SP2, turn right SC5 to Apron C.
S2		S2 - SP2 - SC5 - APRON C. Exit S2 turn left SP2, turn right SC5 to Apron C.
S1		S1 - SP2 - SC5 - APRON C. Exit S1 turn left SP2, turn right SC5 to Apron C.
S3	CHARLIE 6	S3 - SP2 - WC2 - SPW - APRON C. Exit S3 turn left SP2, turn right WC2, turn right SPW to Apron C.
S2		S2 - SP2 - WC2 - SPW - APRON C. Exit S2 turn left SP2, turn right WC2, turn right SPW to Apron C.
S1		S1 - SP2 - WC2 - SPW - APRON C. Exit S1 turn left SP2, turn right WC2, turn right SPW to Apron C.
S3	DELTA 10	S3 - SP2 - WC2 - NPW - APRON D. Exit S3 turn left SP2, turn right WC2, turn right NPW to Apron D.
S2		S2 - SP2 - WC2 - NPW - APRON D. Exit S2 turn left SP2, turn right WC2, turn right NPW to Apron D.
S1		S1 - SP2 - WC2 - NPW - APRON D. Exit S1 turn left SP2, turn right WC2, turn right NPW to Apron D.
S3	DELTA 11	S3 - SP2 - WC2 - NP2 - NCZ - APRON D. Exit S3 turn left SP2, turn right WC2, turn right NP2, turn right NCZ to Apron D.
S2		S2 - SP2 - WC2 - NP2 - NCZ - APRON D. Exit S2 turn left SP2, turn right WC2, turn right NP2, turn right NCZ to Apron D.
S1		S1 - SP2 - WC2 - NP2 - NCZ - APRON D. Exit S1 turn left SP2, turn right WC2, turn right NP2, turn right NCZ to Apron D.

WIII

**JEPPESSEN**  
21 JUN 02 (10-6D)

**TAXI**  
JAKARTA, INDONESIA  
SOEKARNO-HATTA INTL

**Landing Runway 07R continued**

Exit	Route No.	TAXI ROUTING
S3	ECHO 10	S3 - SP2 - WC2 - NP2 - NC4 - APRON E. Exit S3 turn left SP2, turn right WC2, turn right NP2, turn right NC4 to Apron E.
S2		S2 - SP2 - WC2 - NP2 - NC4 - APRON E. Exit S2 turn left SP2, turn right WC2, turn right NP2, turn right NC4 to Apron E.
S1		S1 - SP2 - WC2 - NP2 - NC4 - APRON E. Exit S1 turn left SP2, turn right WC2, turn right NP2, turn right NC4 to Apron E.
S3	ECHO 11	S3 - SP2 - WC2 - NP2 - NCY - APRON E/F. Exit S3 turn left SP2, turn right WC2, turn right NP2, turn right NCY to Apron E.
S2		S2 - SP2 - WC2 - NP2 - NCY - APRON E/F. Exit S2 turn left SP2, turn right WC2, turn right NP2, turn right NCY to Apron E.
S1		S1 - SP2 - WC2 - NP2 - NCY - APRON E/F. Exit S1 turn left SP2, turn right WC2, turn right NP2, turn right NCY to Apron E.
S3	FOXTROT 6	S3 - SP2 - WC2 - NP2 - NC3 - APRON F. Exit S3 turn left SP2, turn right WC2, turn right NP2, turn right NC3 to Apron F.
S2		S2 - SP2 - WC2 - NP2 - NC3 - APRON F. Exit S2 turn left SP2, turn right WC2, turn right NP2, turn right NC3 to Apron F.
S1		S1 - SP2 - WC2 - NP2 - NC3 - APRON F. Exit S1 turn left SP2, turn right WC2, turn right NP2, turn right NC3 to Apron F.

WIII

**JEPPESSEN**  
 21 JUN 02 (10-6E)

**TAXI**  
**JAKARTA, INDONESIA**  
 SOEKARNO-HATTA INTL

**Landing Runway 25L**

Exit	Route No.	TAXI ROUTING
S4	ALPHA 1	S4 - SP2 - SC3 - APRON A. Exit S4 turn right SP2, turn left SC3 to Apron A.
S5		S5 - SP2 - SC3 - APRON A. Exit S5 turn right SP2, turn left SC3 to Apron A.
S6		S6 - SP2 - SC3 - APRON A. Exit S6 turn right SP2, turn left SC3 to Apron A.
S7		S7 - SP2 - SC3 - APRON A. Exit S7 turn right SP2, turn left SC3 to Apron A.
S4	BRAVO 1	S4 - SC4 - APRON B. Exit S4 entering SC4 to Apron B.
S4	BRAVO 2	S4 - SP2 - SCX - APRON A/B. Exit S4 turn right SP2, turn left SCX to Apron B.
S5		S5 - SP2 - SCX - APRON A/B. Exit S5 turn right SP2, turn left SCX to Apron B.
S6		S6 - SP2 - SCX - APRON A/B. Exit S6 turn right SP2, turn left SCX to Apron B.
S7		S7 - SP2 - SCX - APRON A/B. Exit S7 turn right SP2, turn left SCX to Apron B.
S5	BRAVO 3	S5 - SP2 - SC4 - APRON B. Exit S5 turn right SP2, turn left SC4 to Apron B.
S6		S6 - SP2 - SC4 - APRON B. Exit S6 turn right SP2, turn left SC4 to Apron B.
S7		S7 - SP2 - SC4 - APRON B. Exit S7 turn right SP2, turn left SC4 to Apron B.
S4	CHARLIE 1	S4 - SP2 - SC5 - APRON B/C. Exit S4 turn left SP2, turn right SC5 to Apron C.
S6		S6 - SP2 - SC5 - APRON B/C. Exit S6 turn right SP2, turn left SC5 to Apron C.
S7		S7 - SP2 - SC5 - APRON B/C. Exit S7 turn right SP2, turn left SC5 to Apron C.
S5	CHARLIE 2	S5 - SC5 - APRON B/C. Exit S5 enter SC5 to Apron C.
S4	CHARLIE 3	S4 - SP2 - WC2 - SPW - APRON C. Exit S4 turn left SP2, turn right WC2, turn right SPW to Apron C.
S5		S5 - SP2 - WC2 - SPW - APRON C. Exit S5 turn left SP2, turn right WC2, turn right SPW to Apron C.
S7		S7 - SP2 - WC2 - SPW - APRON C. Exit S7 turn right SP2, turn left WC2, turn right SPW to Apron C.
S6	CHARLIE 4	S6 - WC2 - SPW - APRON C. Exit S6 enter WC2, turn right SPW to Apron C.

WIII

**JEPPESSEN**  
 21 JUN 02 (10-6F)

**TAXI**  
**JAKARTA, INDONESIA**  
 SOEKARNO-HATTA INTL

**Landing Runway 25L continued**

Exit	Route No.	TAXI ROUTING
S4	DELTA 6	S4 - SP2 - WC2 - NPW - APRON D. Exit S4 turn left SP2, turn right WC2, turn right NPW to Apron D.
S5		S5 - SP2 - WC2 - NPW - APRON D. Exit S5 turn left SP2, turn right WC2, turn right NPW to Apron D.
S7		S7 - SP2 - WC2 - NPW - APRON D. Exit S7 turn right SP2, turn left WC2, turn right NPW to Apron D.
S4	DELTA 7	S4 - SP2 - WC2 - NP2 - NCZ - APRON D. Exit S4 turn left SP2, turn right WC2, turn right NP2, turn right NCZ to Apron D.
S5		S5 - SP2 - WC2 - NP2 - NCZ - APRON D. Exit S5 turn left SP2, turn right WC2, turn right NP2, turn right NCZ to Apron D.
S7		S7 - SP2 - WC2 - NP2 - NCZ - APRON D. Exit S7 turn right SP2, turn left WC2, turn right NP2, turn right NCZ to Apron D.
S6	DELTA 8	S6 - WC2 - NPW - APRON D. Exit S6 join WC2, turn right NPW to Apron D.
S6	DELTA 9	S6 - WC2 - NP2 - NCZ - APRON D. Exit S6 join WC2, turn right NP2, turn right NCZ to Apron D.
S4	ECHO 6	S4 - SP2 - WC2 - NP2 - NC4 - APRON E. Exit S4 turn left SP2, turn right WC2, turn right NP2, turn right NC4 to Apron E.
S5		S5 - SP2 - WC2 - NP2 - NC4 - APRON E. Exit S5 turn left SP2, turn right WC2, turn right NP2, turn right NC4 to Apron E.
S7		S7 - SP2 - WC2 - NP2 - NC4 - APRON E. Exit S7 turn right SP2, turn left WC2, turn right NP2, turn right NC4 to Apron E.
S6	ECHO 7	S6 - WC2 - NP2 - NC4 - APRON E. Exit S6 join WC2, turn right NP2, turn right NC4 to Apron E.
S4	ECHO 8	S4 - SP2 - WC2 - NP2 - NCY - APRON E/F. Exit S4 turn left SP2, turn right WC2, turn right NP2, turn right NCY to Apron E.
S5		S5 - SP2 - WC2 - NP2 - NCY - APRON E/F. Exit S5 turn left SP2, turn right WC2, turn right NP2, turn right NCY to Apron E.
S7		S7 - SP2 - WC2 - NP2 - NCY - APRON E/F. Exit S7 turn right SP2, turn left WC2, turn right NP2, turn right NCY to Apron E.
S6	ECHO 9	S6 - WC2 - NP2 - NCW - APRON E. Exit S6 join WC2, turn right NP2, turn right NCY to Apron E.

WIII

**JEPPESEN**  
21 JUN 02 (10-6G)

**TAXI**  
JAKARTA, INDONESIA  
SOEKARNO-HATTA INTL

**Landing Runway 25L continued**

Exit	Route No.	TAXI ROUTING
S4	FOXTROT 4	S4 - SP2 - WC2 - NP2 - NC3 - APRON F. Exit S4 turn left SP2, turn right WC2, turn right NP2, turn right NC3 to Apron F.
S5		S5 - SP2 - WC2 - NP2 - NC3 - APRON F. Exit S5 turn left SP2, turn right WC2, turn right NP2, turn right NC3 to Apron F.
S7		S7 - SP2 - WC2 - NP2 - NC3 - APRON F. Exit S7 turn right SP2, turn left WC2, turn right NP2, turn right NC3 to Apron F.
S6	FOXTROT 5	S6 - WC2 - NP2 - NC3 - APRON F. Exit S6 join WC2, turn right NP2, turn right NC3 to Apron F.

WIII

**JEPPESEN**  
1 FEB 02 (10-6H)

**TAXI**  
JAKARTA, INDONESIA  
SOEKARNO-HATTA

**TAKE-OFF RWY 07L**

Gate	Route No.	Taxi Routing
SC3	ALPHA 4	SC3 - SP1 - WC2 - NP2 - N6. Gate SC3 turn right SP1, turn right WC2, turn left NP2 to N6.
SCX	BRAVO 7	SCX - SP1 - WC2 - NP2 - N6. Gate SCX turn right SP1, turn right WC2, turn left NP2, turn right to N6.
SC4	BRAVO 8	SC4 - SP1 - WC2 - NP2 - N6. Gate SC4 turn right SP1, turn right WC2, turn left NP2, turn right to N6.
SC5	CHARLIE 7	SC5 - SP1 - WC2 - NP2 - N6. Gate SC5 turn right SP1, turn right WC2, turn left NP2, turn right to N6.
SPW	CHARLIE 8	SPW - WC2 - NP2 - N6. Gate SPW turn right WC2, turn left NP2, turn right to N6.
NPW	DELTA 3	NPW - WC2 - NP2 - NP. Gate NPW turn right WC2, turn left NP2 join N6.
NCZ	DELTA 4	NCZ - NP2 - N6. Gate NCZ turn left NP2, join N6.
NC4	ECHO 3	NC4 - NP2 - N6. Gate NC4 turn left NP2, join N6.
NCY	ECHO 4	NCY - NP2 - N6. Gate NCY turn left NP2, join N6.
NC3	FOXTROT 2	NC3 - NP2 - N6. Gate NC3 turn left NP2, join N6.

WIII

**JEPPESSEN**  
 1 FEB 02 (10-6J)

**TAXI**  
**JAKARTA, INDONESIA**  
 SOEKARNO-HATTA

## TAKE-OFF RWY 25R

Gate	Route No.	Taxi Routing
SC3	ALPHA 3	SC3 - SP1 - WC2 - NP2 - WC1 - NP1 - NC1 - N1. Gate SC3 turn right SP1, turn right WC2, turn right NP2, turn right WC1, turn left NP1, join NC1, N1.
SCX	BRAVO 5	SCX - SP1 - WC2 - NP2 - WC1 - NP1 - NC1 - N1. Gate SCX turn right SP1, turn right WC2, turn right NP2, turn right WC1, turn left NP1, join NC1, N1.
SC4	BRAVO 6	SC4 - SP1 - WC2 - NP2 - WC1 - NC1 - N1. Gate SC4 turn right SP1, turn right WC2, turn right NP2, turn right WC1, turn left NP1, join NC1, N1.
SC4	BRAVO 6H	SC4 - SP1 - WC2 - NP2 - N1. Gate SC4 turn right SP1, turn right WC2, turn right NP2, turn left N1.
SCX	BRAVO 5H	SCX - SP1 - WC2 - NP2 - N1. Gate SCX turn right SP1, turn right WC2, turn right NP2, turn left N1.
SC5	CHARLIE 5	SC5 - SP1 - WC2 - NP2 - WC1 - NP1 - NC1 - N1. Gate SC5 turn right SP1, turn right WC2, turn right NP2, turn right WC1, turn left NP1, join NC1, N1.
SC5	CHARLIE 5H	SC5 - SP1 - WC2 - NP2 - N1. Gate SC5 turn right SP1, turn right WC2, turn right NP2, turn left N1.
SPW	CHARLIE 6	SPW - WC2 - NP2 - WC1 - NP1 - NC1 - N1. Gate SPW turn right WC2, turn right NP2, turn right WC1, turn left NP1, join NC1, N1.
SPW	CHARLIE 6H	SPW - WC2 - NP2 - N1. Gate SPW turn right WC2, turn right NP2, turn left N1.
NPW	DELTA 1	NPW - WC2 - NP2 - WC1 - NC1 - N1. Gate NPW turn right WC2, turn right NP2, turn right WC1, turn left NP1, join NC1, N1.
NPW	DELTA 1H	NPW - WC2 - NP2 - N1. Gate NPW turn right WC2, turn right NP2, join N1.
NCZ	DELTA 2	NCZ - NP1 - NC1 - N1. Gate NCZ turn right NP1, join NC1, N1.
NCZ	DELTA 2H	NCZ - NP2 - N1. Gate NCZ turn right NP2, join N1.
NC4	ECHO 1	NC4 - NP1 - NC1 - N1. Gate NC4 turn right NP1, join NC1, N1.
NCY	ECHO 2	NCY - NP1 - NC1 - N1. Gate NCY turn right NP1, join NC1, N1.
NC4	ECHO 1H	NC4 - NP2 - N1. Gate NC4 turn right NP2, join N1.
NCY	ECHO 2H	NCY - NP2 - N1. Gate NCY turn right NP2, join N1.
NC3	FOXTROT 1	NC3 - NP1 - NC1 - N1. Gate NC3 turn right NP1, join NC1, N1.
NC3	FOXTROT 1H	NC3 - NP2 - N1. Gate NC3 turn right NP2, join N1.

WIII

**JEPPESSEN**  
 1 FEB 02 (10-6K)

**TAXI**  
**JAKARTA, INDONESIA**  
 SOEKARNO-HATTA

## Take-off Runway 07R

Gate	Route No.	TAXI ROUTING
SC3	ALPHA 2	SC3 - SP1 - WC1 - SP2 - S7. Gate SC3 turn right SP1, turn left WC1, turn right SP2, join S7.
SCX	BRAVO 3	SCX - SP1 - WC1 - SP2 - S7. Gate SCX turn right SP1, turn left WC1, turn right SP2, turn left S7.
SC4	BRAVO 4	SC4 - SP1 - WC1 - SP2 - S7. Gate SC4 turn right SP1, turn left WC1, turn right SP2, turn left S7.
SC5	CHARLIE 3	SC5 - SP1 - WC1 - SP2 - S7. Gate SC5 turn right SP1, turn left WC1, turn right SP2, turn left S7.
SPW	CHARLIE 4	SPW - WC1 - SP2 - S7. Gate SPW turn left WC1, turn right SP2, turn left S7.
NPW	DELTA 7	NPW - WC1 - SP2 - S7. Gate NPW turn left WC1, turn right SP2, join S7.
NCZ	DELTA 8	NCZ - NP1 - WC1 - SP2 - S7. Gate NCZ turn left NP1, turn left WC1, turn right SP2, join S7.
NC4	ECHO 7	NC4 - NP1 - WC1 - SP2 - S7. Gate NC4 turn left NP1, turn left WC1, turn right SP2, join S7.
NCY	ECHO 8	NCY - NP2 - WC1 - SP2 - S7. Gate NCY turn left NP2, turn left WC1, turn right SP2, join S7.
NC3	FOXTROT 4	NC3 - NP2 - WC1 - SP2 - S7. Gate NC3 turn left NP2, turn left WC1, turn right SP2, join S7.

WIII

**JEPPESEN**  
1 FEB 02 (10-6L)**TAXI**  
**JAKARTA, INDONESIA**  
SOEKARNO-HATTA**Take-off Runway 25L**

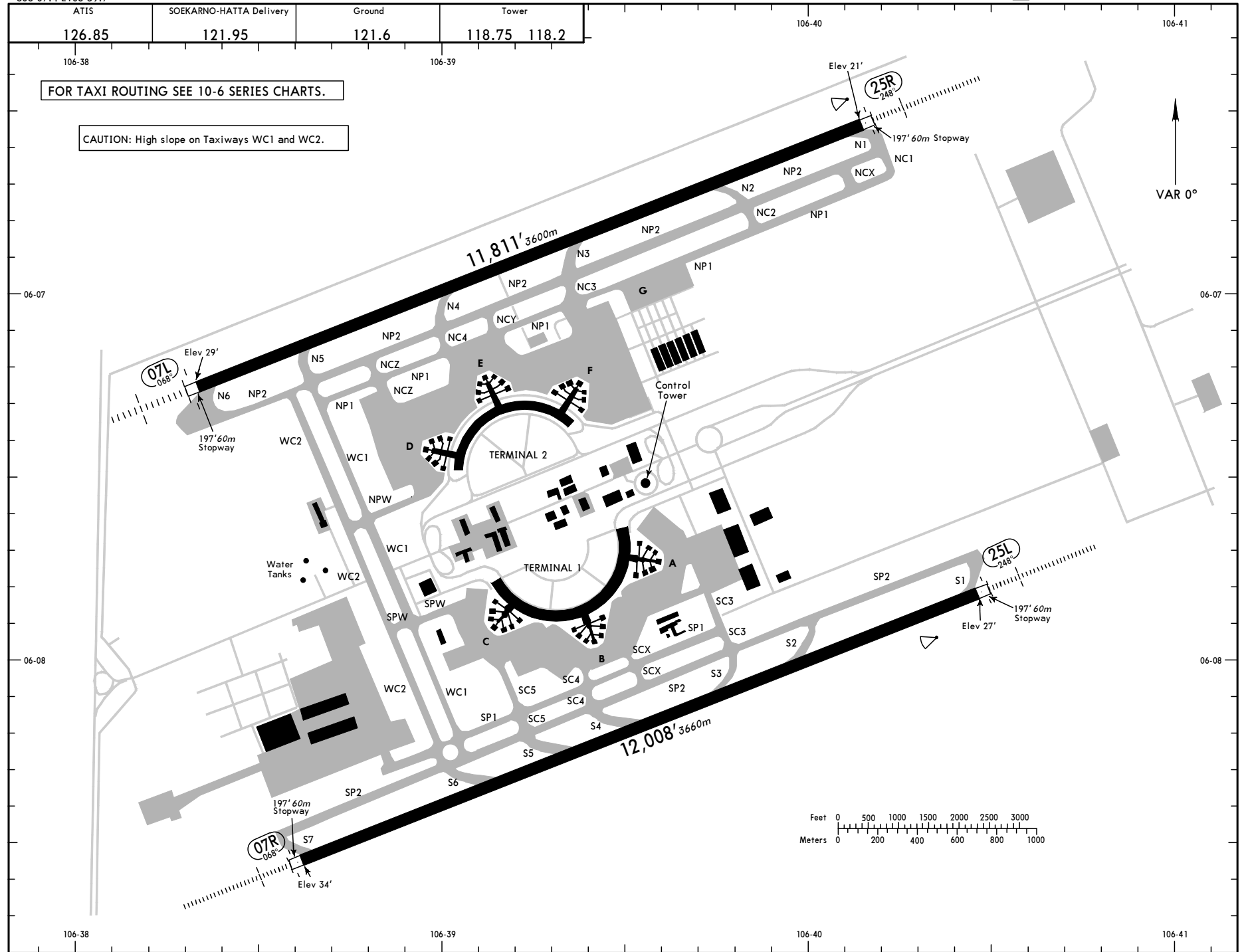
Gate	Route No.	TAXI ROUTING
SC3	ALPHA 1	SC3 - SP2 - S1. Gate SC3 turn left SP2, join S1.
SCX	BRAVO 1	SCX - SP1 - SC3 - SP2 - S1. Gate SCX turn left SP1, turn right SC3, turn left SP2, turn right S1.
SC4	BRAVO 2	SC4 - SP1 - SC3 - SP2 - S1. Gate SC4 turn left SP1, turn right SC3, turn left SP2, turn right S1.
SC5	CHARLIE 1	SC5 - SP1 - SC3 - SP2 - S1. Gate SC5 turn left SP1, turn right SC3, turn left SP2, turn right S1.
SPW	CHARLIE 2	SPW - WC1 - SP1 - SC3 - SP2 - S1. Gate SPW turn left WC1, turn left SP1, turn right SC3, turn left SP2, turn right S1.
NPW	DELTA 5	NPW - WC1 - SP1 - SC3 - SP2 - S1. Gate NPW turn left WC1, turn left SP1, turn right SC3, turn left SP2, join S1.
NCZ	DELTA 6	NCZ - NP1 - WC1 - SP1 - SC3 - SP2 - S1. Gate NCZ turn left NP1, turn left WC1, turn left SP1, turn right SC3, turn left SP2, join S1.
NC4	ECHO 5	NC4 - NP1 - WC1 - SP1 - SC3 - SP2 - S1. Gate NC4 turn left NP1, turn left WC1, turn left SP1, turn right SC3, turn left SP2, join S1.
NCY	ECHO 6	NCY - NP1 - WC1 - SP1 - SC3 - SP2 - S1. Gate NCY turn left NP1, turn left WC1, turn left SP1, turn right SC3, turn left SP2, join S1.
NC3	FOXTROT 3	NC3 - NP2 - WC1 - SP1 - SC3 - SP2 - S1. Gate NC3 turn left NP2, turn left WC1, turn left SP1, turn right SC3, turn left SP2, join S1.

WIII/CGK

Apt Elev 34'  
506 07.4 E106 39.7

JEPPESEN JAKARTA, INDONESIA

24 SEP 04 (10-9) SOEKARNO-HATTA INTL



FOR TAXI ROUTING SEE 10-6 SERIES CHARTS.

CAUTION: High slope on Taxiways WC1 and WC2.

WIII/CGK

**JEPPESEN**  
24 SEP 04 (10-9A)

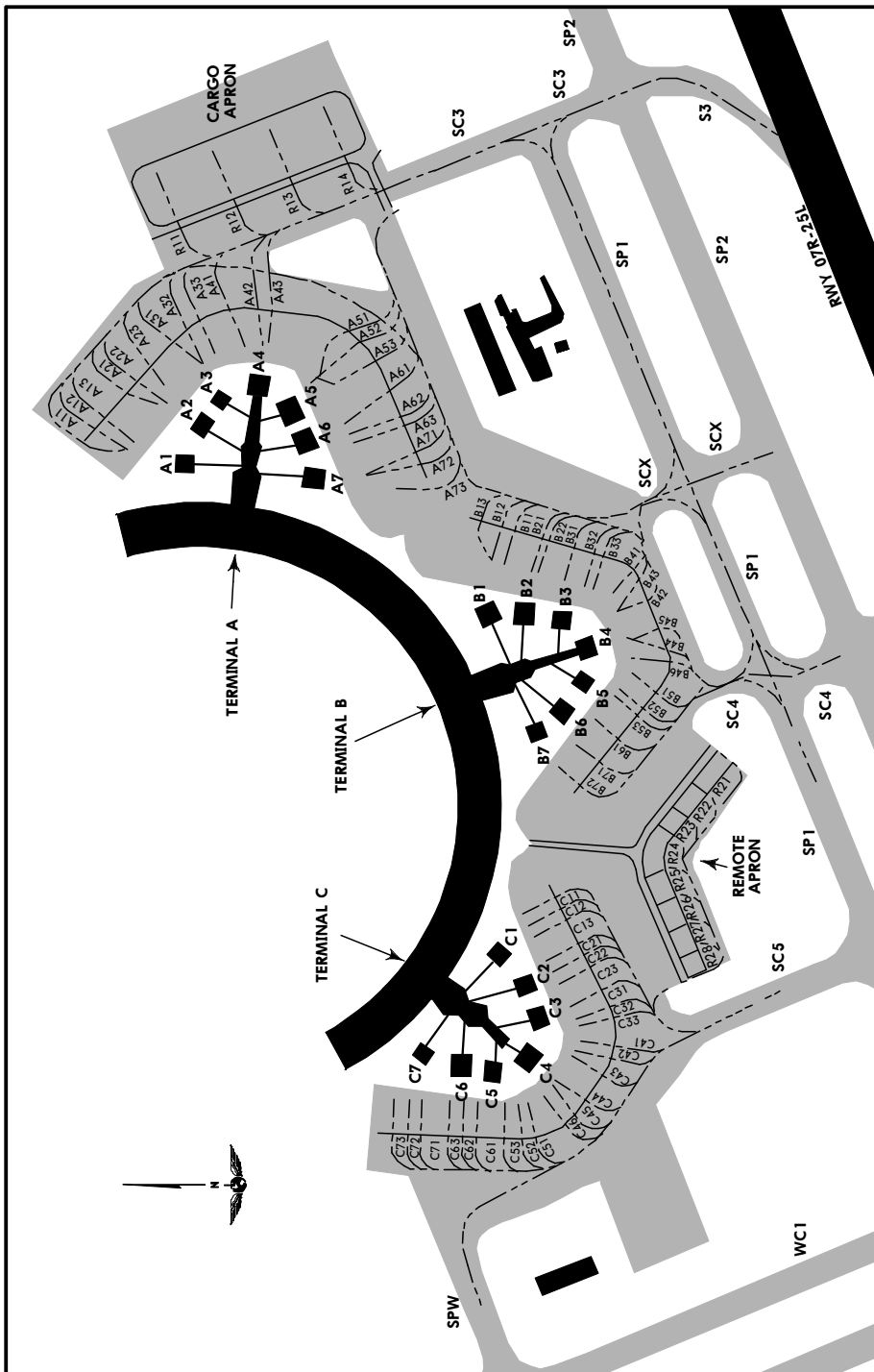
**JAKARTA, INDONESIA**  
SOEKARNO-HATTA INTL

GENERAL					
CAUTION: Advised while taking off and landing Rwy 25 and Rwy 07 due to kites. Seasonal bird activity observed in the vicinity of aerodrome. In case of bird strike, pilots are required to file bird strike form to AIS briefing office. Prior permission required from Airport Authority for non-scheduled aircraft due to limited aircraft parking.					
ADDITIONAL RUNWAY INFORMATION					
RWY	USABLE LENGTHS			TAKE-OFF	WIDTH
	HIRL CL	SFL PAPI (angle 3.0°)	LANDING BEYOND Threshold		
07R	HIRL CL HIALS SFL PAPI (angle 3.0°)		11109'	3386m	197'
25L	HIRL CL HIALS SFL PAPI (angle 3.0°) RVR		11056'	3370m	60m
07L	HIRL CL SALS PAPI (angle 3.0°)		10815'	3297m	197'
25R	HIRL CL HIALS SFL PAPI (angle 3.0°) RVR		10820'	3298m	60m
TAKE-OFF					
AIR CARRIER All Rwys LVP must be in force.			AIR CARRIER (FAR 121) All Rwys		
RL & CL	RCLM (Day only) or RL		Adequate Vis Ref		
A	200m	250m	2 Eng	RVR 500m VIS 400m	
B			3 & 4		
D	250m	300m	Eng		

CHANGES: PAPI added; take-off minimums.

WIII/CGK

JEPPESEN JAKARTA, INDONESIA  
 (10-9B) 21 SEP 07 SOEKARNO-HATTA INTL



**PARKING STAND COORDINATES**

STAND No.	COORDINATES	STAND No.	COORDINATES
<b>CARGO APRON</b>		<b>TERMINAL B APRON</b>	
R11, R12	S06 07.7 E106 39.7	B11 thru B13	S06 07.9 E106 39.5
R13	S06 07.7 E106 39.8	B21	S06 07.9 E106 39.4
R14	S06 07.8 E106 39.8	B22, B31	S06 07.9 E106 39.5
<b>REMOTE APRON</b>		B32	S06 08.0 E106 39.4
R21 thru R25	S06 08.0 E106 39.3	B33, B41	S06 08.0 E106 39.5
R26 thru R28	S06 08.0 E106 39.2	B42, B43	S06 08.0 E106 39.4
<b>TERMINAL A APRON</b>		B44 thru B46	S06 08.0 E106 39.4
A11	S06 07.6 E106 39.6	B51 thru B53	S06 08.0 E106 39.4
A12	S06 07.7 E106 39.5	B61	S06 08.0 E106 39.3
A13	S06 07.6 E106 39.6	B71	S06 07.9 E106 39.4
A21 thru A23	S06 07.7 E106 39.6	B72	S06 07.9 E106 39.3
A31 thru A33	S06 07.7 E106 39.6	<b>TERMINAL C APRON</b>	
A41 thru A43	S06 07.7 E106 39.6	C11 thru C13	S06 07.9 E106 39.2
A51 thru A53	S06 07.8 E106 39.6	C21 thru C23	S06 07.9 E106 39.2
A61	S06 07.8 E106 39.6	C31	S06 07.9 E106 39.2
A62	S06 07.8 E106 39.5	C32	S06 08.0 E106 39.1
A63	S06 07.8 E106 39.6	C33, C41	S06 07.9 E106 39.2
A71 thru A73	S06 07.8 E106 39.5	C42 thru C46	S06 07.9 E106 39.1
		C51 thru C53	S06 07.9 E106 39.1
		C61 thru C63	S06 07.9 E106 39.1
		C71 thru C73	S06 07.8 E106 39.1

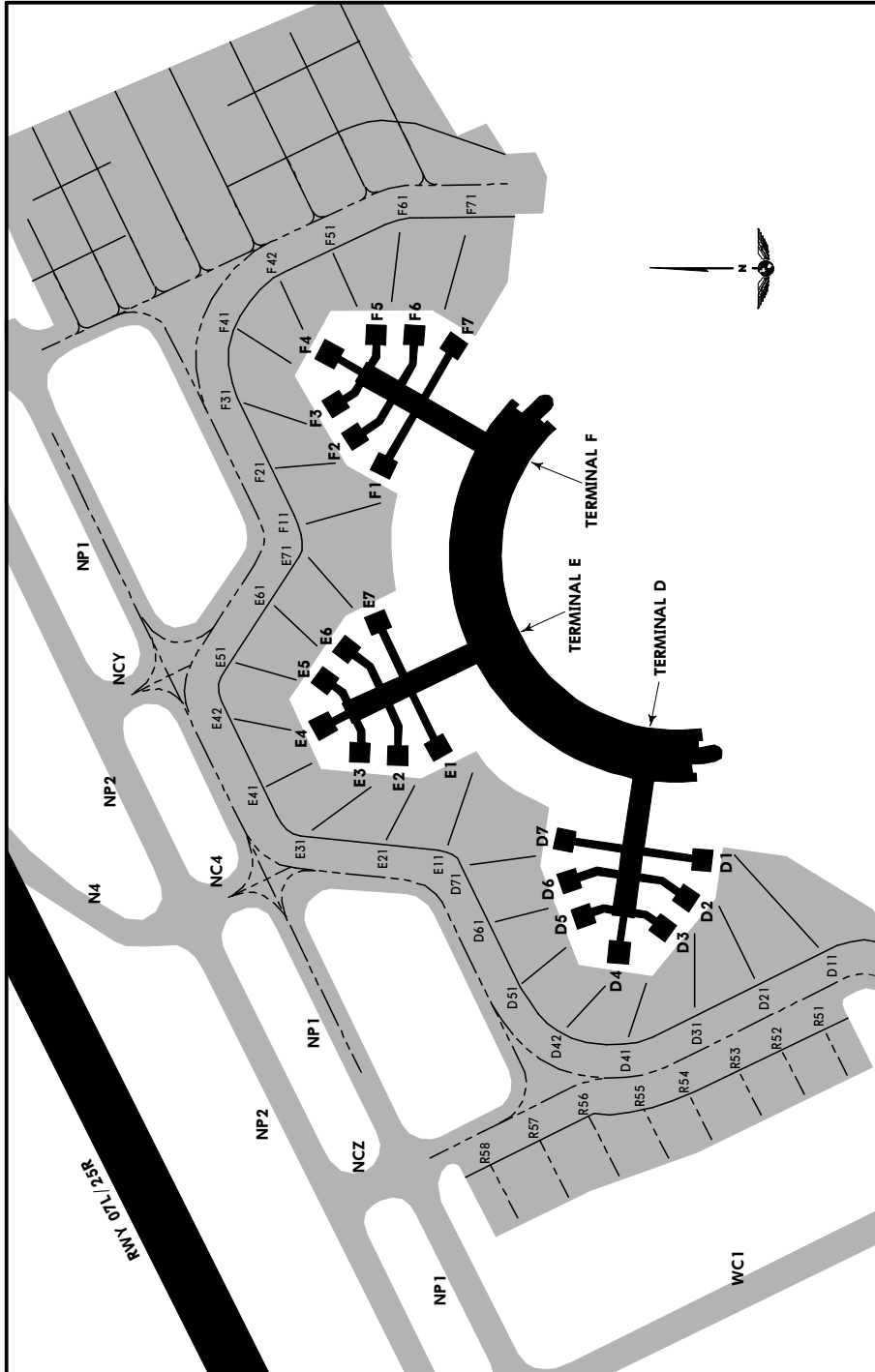
**PUSH BACK PROCEDURES  
 TERMINAL A & C**

<b>BAYS A11 &amp; A12              FACING SOUTH</b>	After push back facing south, aircraft must be pulled out until behind parking A21 thence taxi exit SC3.
<b>BAYS C71, C72, C73              FACING SOUTH</b>	After push back facing south, aircraft must be pulled out until behind bay C62 thence taxi exit SC5.
<b>BAYS C71, C72, C73              FACING NORTH</b>	After push back facing north, aircraft must be pulled out until behind parking bay C62, thence taxi exit SPW.



WIII/CGK

**JEPPesen** JAKARTA, INDONESIA  
 (10-9C) 21 SEP 07 SOEKARNO-HATTA INTL



**PARKING STAND COORDINATES**

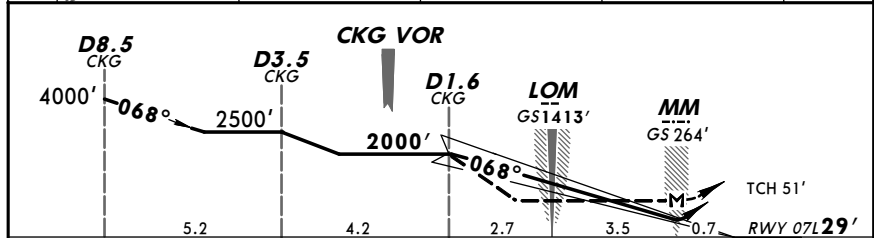
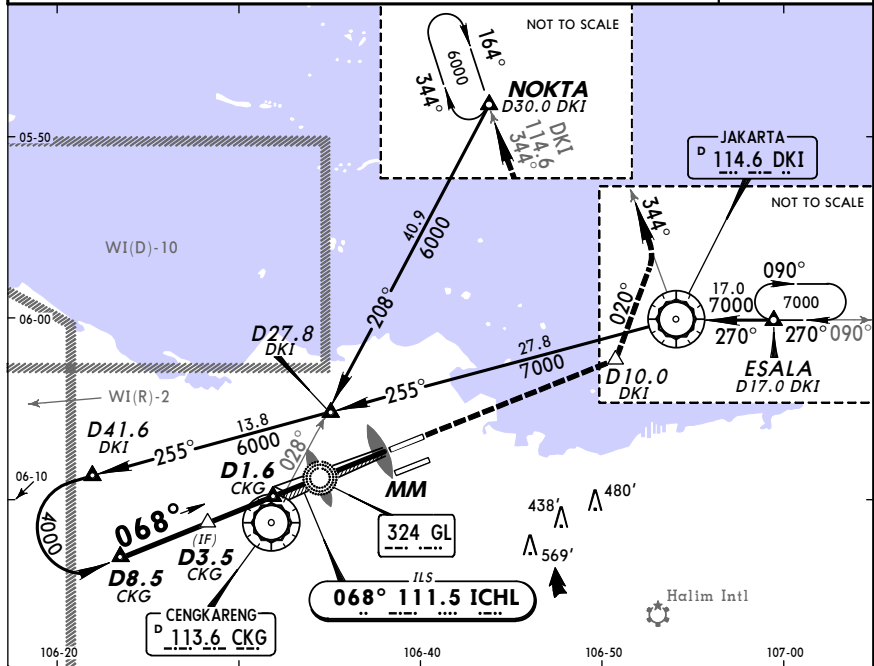
STAND No.	COORDINATES	STAND No.	COORDINATES
<b>TERMINAL D APRON</b>		<b>REMOTE APRON</b>	
D11, D21, D31, D41	S06 07.5 E106 38.9	R51, R52	S06 07.6 E106 38.8
D42, D51, D61, D71	S06 07.4 E106 38.9	R53 thru R55	S06 07.5 E106 38.8
<b>TERMINAL E APRON</b>		R56 thru R58	S06 07.4 E106 38.7
E11, E21, E31	S06 07.3 E106 39.0	R61, R62	S06 07.0 E106 39.4
E41, E42	S06 07.2 E106 39.0	R63	S06 07.1 E106 39.4
E51, E61	S06 07.2 E106 39.1	R64, R65	S06 07.1 E106 39.5
E71	S06 07.3 E106 39.1	R66 thru R68	S06 07.1 E106 39.4
<b>TERMINAL F APRON</b>		R69, R71	S06 07.1 E106 38.5
F11	S06 07.3 E106 39.2	R72 thru R78	S06 07.2 E106 39.5
F21, F31, F41	S06 07.2 E106 39.3	R79	S06 07.3 E106 39.5
F42, F51, F61, F71	S06 07.3 E106 39.3	R81	S06 07.2 E106 39.5
		R82, R83	S06 07.3 E106 39.5

**PUSH BACK PROCEDURES  
 TERMINALS D, E & F**

<b>BAYS D61, D71, E11 &amp; E21              FACING NORTHEAST</b>	Must be pushed back in idle thrust until behind parking bay D61 (this is marked as "End of Push Back" on the ground), facing to NORTHEAST and then taxi via Gate NC4.
<b>BAYS D61, D71, E11 &amp; E21              FACING SOUTHWEST</b>	Must be pushed back in idle thrust until behind parking bay E21 (this is marked as "End of Push Back" on the ground), facing to SOUTHWEST and then taxi via Gate NCZ.
<b>BAYS E61, E71, F11 &amp; F21              FACING SOUTHWEST</b>	Must be pushed back in idle thrust until behind parking bay F21 (this is marked as "End of Push Back" on the ground), facing to SOUTHWEST and then taxi via Gate NCY.
<b>BAYS E61, E71, F11 &amp; F21              FACING SOUTHEAST</b>	Must be pushed back in idle thrust until behind parking bay E61 (this is marked as "End of Push Back" on the ground), facing to SOUTHEAST and then taxi via Gate NC3.
<b>E41 &amp; E31              FACING NORTH</b>	Must be pushed back in idle thrust until behind parking bay E31 (this is marked as "End of Push Back" on the ground), facing to NORTH and then taxi via Gate NC4.

WIII/CGK SOEKARNO-HATTA INTL 5 MAY 06 (11-1) JAKARTA, INDONESIA ILS Rwy 07L

ATIS	*JAKARTA Arrival (R)	JAKARTA Approach (R)		SOEKARNO-HATTA Tower		Ground
126.85	125.45	West 119.75	East 127.9	118.75	118.2	121.6
LOC ICHL	Final Apch Crs	GS LOM	ILS DA(H) Refer to Minimums	Apt Elev 34'	2000'	
111.5	068°	1413'(1384')		RWY 07L 29'	090° ← 270°	
MISSED APCH: Climb STRAIGHT AHEAD to 6000', after passing D10.0 DKI turn LEFT 020° to intercept DKI VOR R-344 outbound to NOKTA or as instructed by ATC.						4500'
Alt Set: hPa Rwy Elev: 1 hPa Trans Level: FL 180 Trans Alt: 18000'						MSA DKI VOR

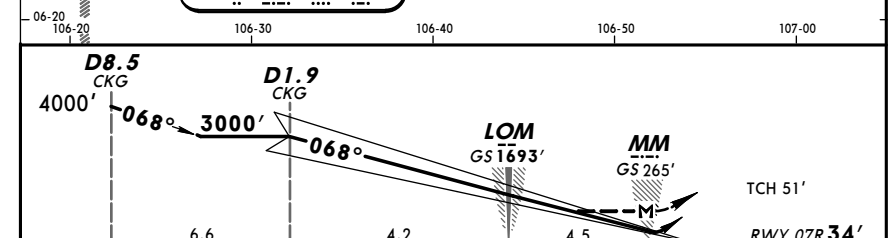
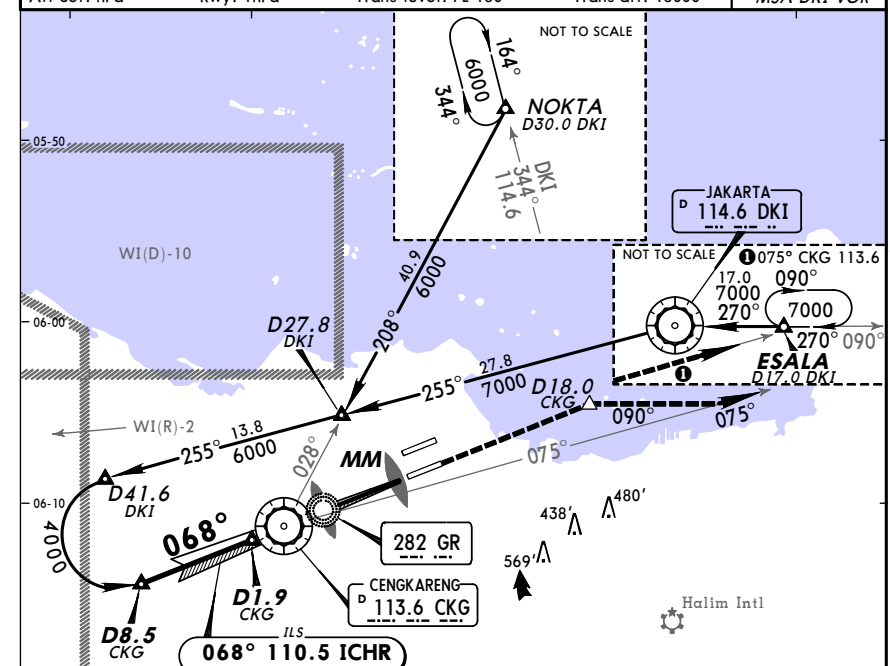


Gnd speed-Kts	70	90	100	120	140	160	SALS	6000'	D10.0	DKI	LT	020°
GS	3.00°	377	484	538	646	753						
MAP at MM or D1.6 CKG to MAP	6.2	5:19	4:08	3:43	3:06	2:39	2:20					

STRAIGHT-IN LANDING RWY07L				CIRCLE-TO-LAND			
ILS DA(H) A,B: 230'(201')		C: 240'(211')		LOC (GS out) MDA(H) 330'(301')			
D: 250'(221')		ALS out		ALS out		Max Kts MDA(H)	
A						100	680'(646')-1600m
B						135	
C	1200m		1200m		1600m	180	680'(646')-2800m
D			1600m			205	1040'(1006')-4800m

WIII/CGK SOEKARNO-HATTA INTL 5 MAY 06 (11-2) JAKARTA, INDONESIA ILS Rwy 07R

ATIS	*JAKARTA Arrival (R)	JAKARTA Approach (R)		SOEKARNO-HATTA Tower		Ground
126.85	125.45	West 119.75	East 127.9	118.75	118.2	121.6
LOC ICHR	Final Apch Crs	GS LOM	ILS DA(H) Refer to Minimums	Apt Elev 34'	2000'	
110.5	068°	1693'(1659')	234 (200')	RWY 07R 34'	090° ← 270°	
MISSED APCH: Climb STRAIGHT AHEAD to 7000', after passing D18.0 CKG turn RIGHT 090° to intercept CKG VOR R-075 outbound to ESALA INT or as instructed by ATC.						4500'
Alt Set: hPa Rwy: 1hPa Trans level: FL 180 Trans alt: 18000'						MSA DKI VOR



Gnd speed-Kts	70	90	100	120	140	160	HIALS	7000'	D18.0	CKG	RT	090°
GS	3.00°	377	484	538	646	753						
MAP at MM or D1.9 CKG to MAP	8.7	7:27	5:48	5:13	4:21	3:44	3:16					

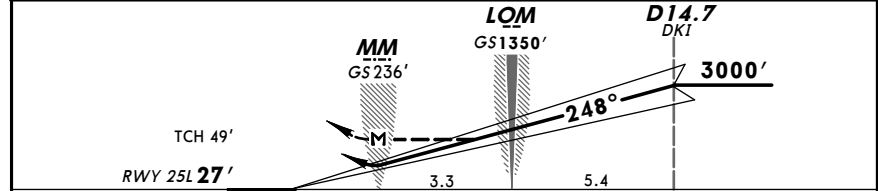
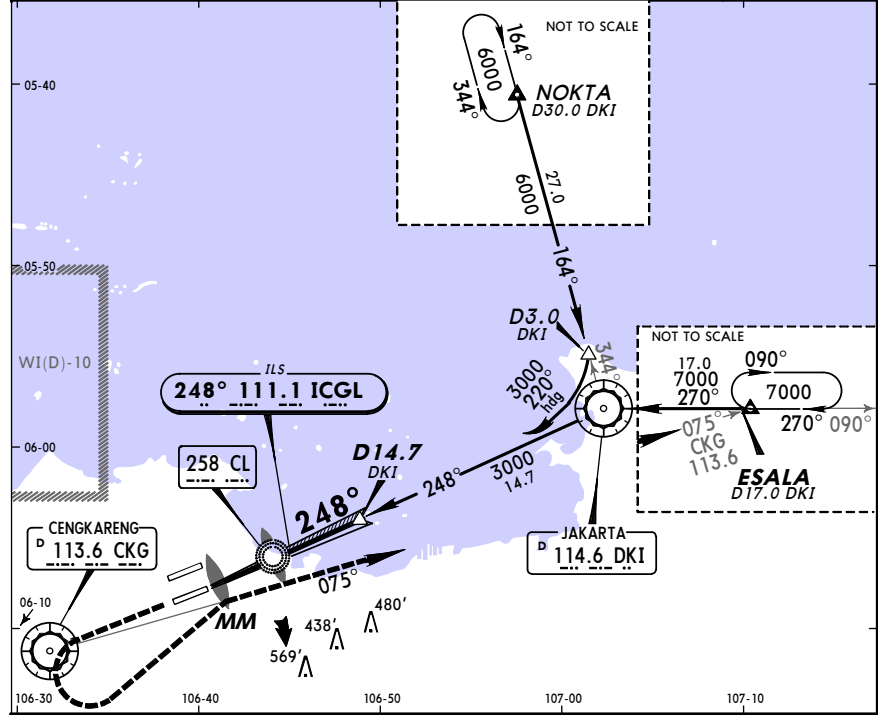
STRAIGHT-IN LANDING RWY07R				CIRCLE-TO-LAND			
ILS DA(H) 234'(200')		LOC (GS out) MDA(H) 360'(326')				Max Kts MDA(H)	
FULL		ALS out		ALS out			
A						100	680'(646')-1600m
B						135	
C	800m		1200m		1600m	180	1040'(1006')-4800m
D			1200m			205	

WIII/CGK SOEKARNO-HATTA INTL 5 MAY 06 (11-3) JAKARTA, INDONESIA ILS Rwy 25L

ATIS	*JAKARTA Arrival (R)	JAKARTA Approach (R)		SOEKARNO-HATTA Tower		Ground
126.85	125.45	East 127.9	West 119.75	118.75	118.2	121.6
LOC ICGL	Final Apch Crs	GS LOM	ILS DA(H)	Apt Elev 34'		2000' 090° ← → 270° 4500'
111.1	248°	1350' (1323')	236' (209')	RWY 25L 27'		

MISSED APCH: Climb to 7000', after passing 2000', turn LEFT to intercept CKG VOR R-075 outbound, proceed to ESALA or as instructed by ATC.

Alt Set: hPa Rwy: 1 hPa Trans level: FL 180 Trans alt: 18000' MSA CL LOM



Gnd speed-Kts	70	90	100	120	140	160	HIALS	7000'	2000'	CKG	ESALA
GS	3.00°	377	484	538	646	753	861	PAPI	PAPI	113.6	R-075
MAP at MM or D14.7 to MAP	8.7	7:27	5:48	5:13	4:21	3:44	3:16	↑ after passing ↓ LT		113.6	R-075

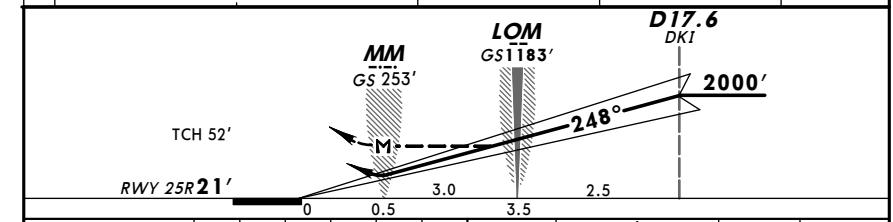
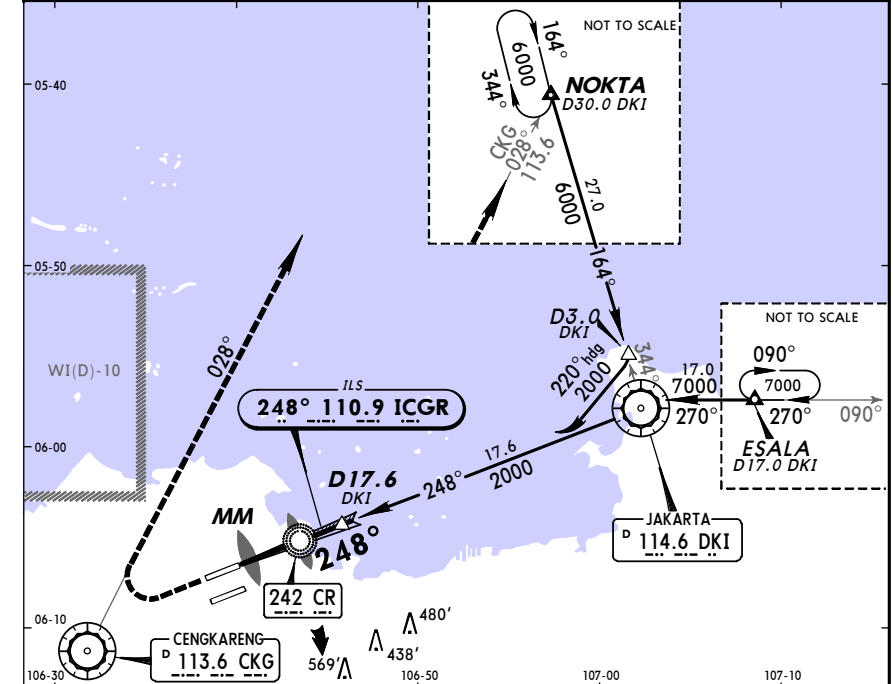
STRAIGHT-IN LANDING RWY25L				CIRCLE-TO-LAND	
ILS		LOC (GS out)		Max Kts	
DA(H) 236' (209')		MDA(H) 480' (453')		MDA(H)	
FULL	ALS out	ALS out	ALS out		
A		RVR 720m VIS 800m	RVR 1500m VIS 1600m	100	680' (646') - 1600m
B				135	
C	RVR 720m VIS 800m	1200m	1200m RVR 1800m VIS 2000m	180	680' (646') - 2800m
D			RVR 1500m VIS 1600m	205	1040' (1006') - 4800m

WIII/CGK SOEKARNO-HATTA INTL 5 MAY 06 (11-4) JAKARTA, INDONESIA ILS Rwy 25R

ATIS	*JAKARTA Arrival (R)	JAKARTA Approach (R)		SOEKARNO-HATTA Tower		Ground
126.85	125.45	East 127.9	West 119.75	118.75	118.2	121.6
LOC ICGR	Final Apch Crs	GS LOM	ILS DA(H)	Apt Elev 34'		2000' 090° ← → 270° 4500'
110.9	248°	1183' (1162')	230' (209')	RWY 25R 21'		

MISSED APCH: Climb to 6000', after passing 2000', turn RIGHT to intercept CKG VOR R-028 outbound, proceed to NOKTA or as instructed by ATC.

Alt Set: hPa Rwy Elev: 1hPa Trans level: FL 180 Trans alt: 18000' MSA CR LOM



Gnd speed-Kts	70	90	100	120	140	160	HIALS	6000'	2000'	CKG	NOKTA
GS	3.00°	377	484	538	646	753	861	PAPI	PAPI	113.6	R-028
MAP at MM or D17.6 DK1 to MAP	5.5	4:43	3:40	3:18	2:45	2:21	2:04	↑ after passing ↓ RT		113.6	R-028

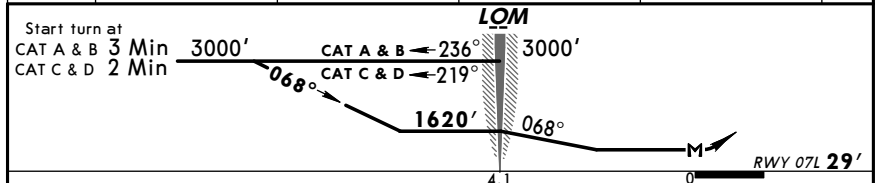
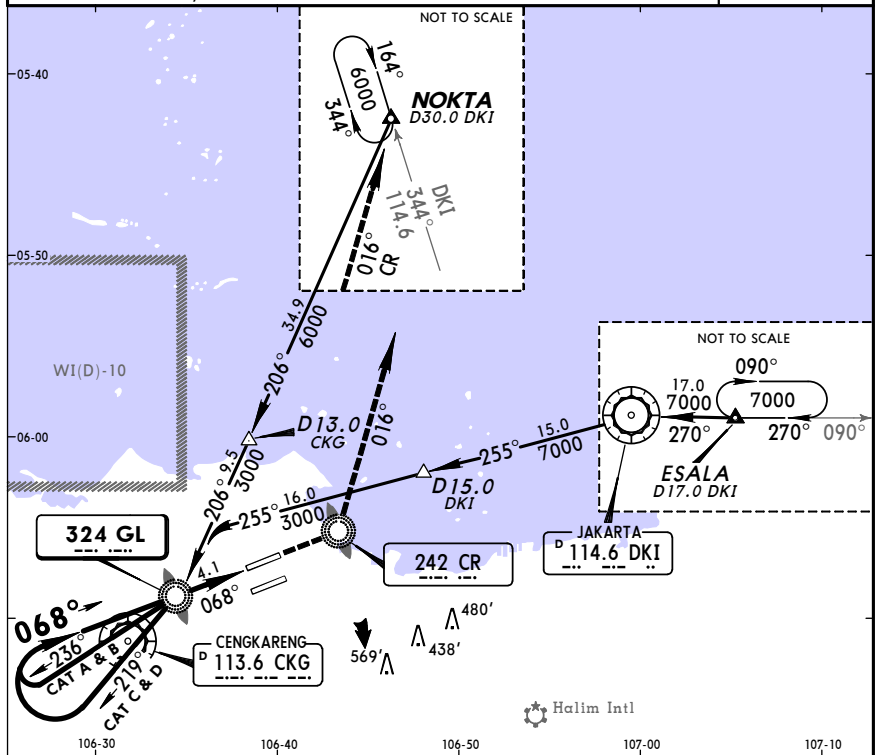
STRAIGHT-IN LANDING RWY25R				CIRCLE-TO-LAND	
ILS		LOC (GS out)		Max Kts	
DA(H) 230' (209')		MDA(H) 370' (349')		MDA(H)	
FULL	ALS out	ALS out	ALS out		
A		RVR 720m VIS 800m	RVR 1500m VIS 1600m	100	680' (646') - 1600m
B				135	
C	RVR 720m VIS 800m	1200m	1200m RVR 1800m VIS 2000m	180	680' (646') - 2800m
D			RVR 1500m VIS 1600m	205	1040' (1006') - 4800m

**WIII/CGK** **JEPPesen** **JAKARTA, INDONESIA**  
 SOEKARNO-HATTA INTL 5 MAY 06 (16-1) **NDB Rwy 07L**

ATIS 126.85	*JAKARTA Arrival (R) 125.45	JAKARTA Approach (R) East 127.9 West 119.75	SOEKARNO-HATTA Tower 118.75 118.2	Ground 121.6
LOM GR 324	Final Apch Crs 068°	Minimum Alt LOM 1620' (1591')	MDA(H) 510' (481')	Apt Elev 34' RWY 07L 29'

MISSED APCH: Climb to 6000' at CR LOM, turn LEFT via 016° bearing from CR LOM, proceed to NOKTA INT or as instructed by ATC.

Alt Set: hPa Rwy Elev: 1 hPa Trans level: FL 180 Trans alt: 18000' MSA GL LOM



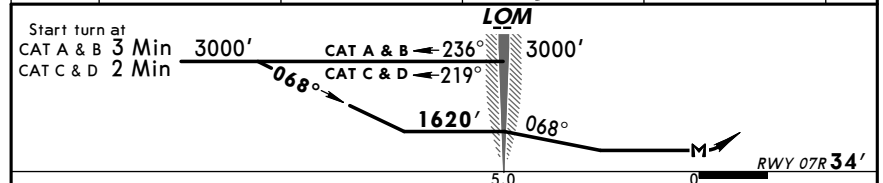
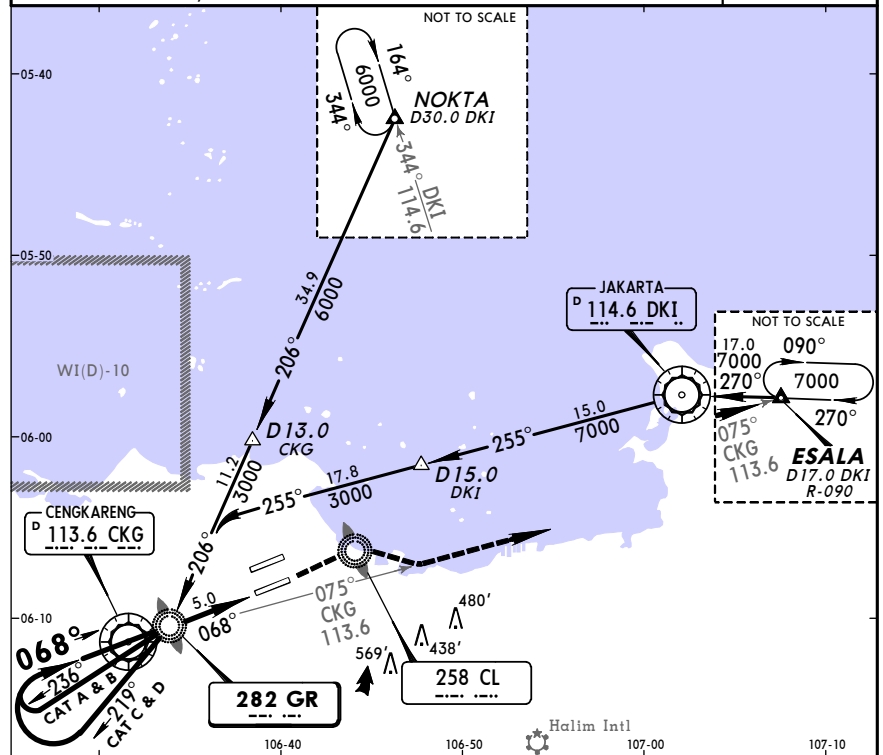
Gnd speed-Kts	70	90	100	120	140	160	SALS	6000'	CR	242	LT	via 016°
LOM to MAP	4.1	3:31	2:44	2:28	2:03	1:45	1:32					
STRAIGHT-IN LANDING RWY07L						CIRCLE-TO-LAND						
MDA(H) 510' (481')						MDA(H)						
A	ALS out		Max Kts									
B	1200m	1600m	100	680' (646')-1600m								
C		2000m	135									
D	2000m	2400m	180	1040' (1006')-4800m								
			205									

**WIII/CGK** **JEPPesen** **JAKARTA, INDONESIA**  
 SOEKARNO-HATTA INTL 5 MAY 06 (16-2) **NDB Rwy 07R**

ATIS 126.85	*JAKARTA Arrival (R) 125.45	JAKARTA Approach (R) East 127.9 West 119.75	SOEKARNO-HATTA Tower 118.75 118.2	Ground 121.6
LOM GR 282	Final Apch Crs 068°	Minimum Alt LOM 1620' (1586')	MDA(H) 510' (476')	Apt Elev 34' RWY 07R 34'

MISSED APCH: Climb to 7000', at CL LOM, turn RIGHT to intercept CKG VOR R-075 outbound, proceed to ESALA or as instructed by ATC.

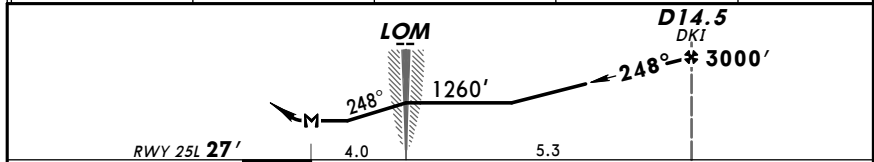
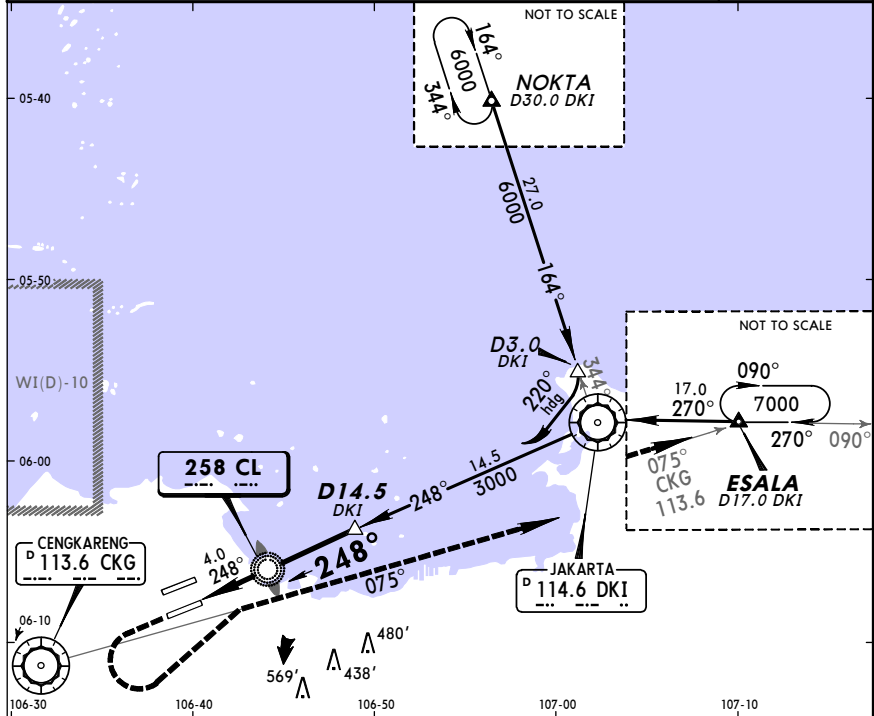
Alt Set: hPa Rwy Elev: 1 hPa Trans level: FL 180 Trans alt: 18000' MSA GR LOM



Gnd speed-Kts	70	90	100	120	140	160	HIALS	7000'	CL	258	RT	CKG 113.6 R-075
LOM to MAP	5.0	4:17	3:20	3:00	2:30	2:09	1:53					
STRAIGHT-IN LANDING RWY07R						CIRCLE-TO-LAND						
MDA(H) 510' (476')						MDA(H)						
A	ALS out		Max Kts									
B	1200m	1600m	100	680' (646')-1600m								
C		2000m	135									
D	2000m	2400m	180	1040' (1006')-4800m								
			205									

WIII/CGK SOEKARNO-HATTA INTL 5 MAY 06 (16-3) JAKARTA, INDONESIA NDB Rwy 25L

ATIS 126.85	*JAKARTA Arrival (R) 125.45	JAKARTA Approach (R) East 127.9 West 119.75	SOEKARNO-HATTA Tower 118.75 118.2	Ground 121.6
LOM CL 258	Final Apch Crs 248°	Minimum Alt D14.5 3000' (2973')	MDA(H) 510' (483')	Apt Elev 34' RWY 25L 27'
MISSED APCH: Climb to 7000', after passing 2000' turn LEFT to intercept CKG VOR R-075 outbound, proceed to ESALA or as instructed by ATC.				2000' 090° ← → 270° 4500'
Alt Set: hPa	Rwy Elev: 1 hPa	Trans level: FL 180	Trans alt: 18000'	MSA CL LOM

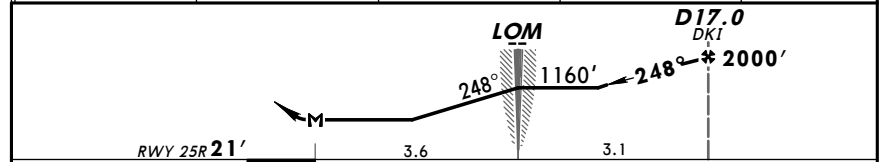
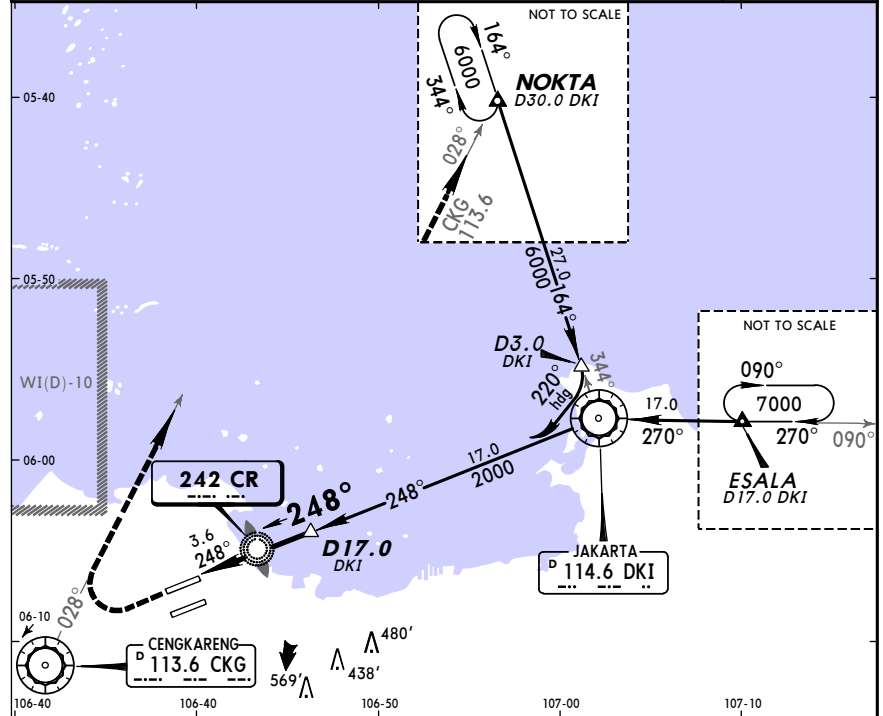


Gnd speed-Kts	70	90	100	120	140	160	HIALS	7000'	2000'	CKG	ESALA
							PAPI	↑	←	113.6	
D14.5 DKI to MAP 9.3 7:58 6:12 5:35 4:39 3:59 3:29										R-075	

STRAIGHT-IN LANDING RWY25L			CIRCLE-TO-LAND		
MDA (H) 510' (483')			MDA (H)		
	ALS out	Max Kts			
A		100	680' (646')-1600m		
B	1200m	135	680' (646')-2800m		
C	RVR 1800m VIS 2000m	180	680' (646')-2800m		
D	RVR 1800m VIS 2000m	205	1040' (1006')-4800m		

WIII/CGK SOEKARNO-HATTA INTL 5 MAY 06 (16-4) JAKARTA, INDONESIA NDB Rwy 25R

ATIS 126.85	*JAKARTA Arrival (R) 125.45	JAKARTA Approach (R) East 127.9 West 119.75	SOEKARNO-HATTA Tower 118.75 118.2	Ground 121.6
LOM CR 242	Final Apch Crs 248°	Minimum Alt D17.0 2000' (1979')	MDA(H) 490' (469')	Apt Elev 34' RWY 25R 21'
MISSED APCH: Climb to 6000', after passing 2000' turn RIGHT to intercept CKG VOR R-028 outbound, proceed to NOKTA or as instructed by ATC.				2000' 090° ← → 270° 4500'
Alt Set: hPa	Rwy Elev: 1 hPa	Trans level: FL 180	Trans alt: 18000'	MSA CR LOM



Gnd speed-Kts	70	90	100	120	140	160	HIALS	6000'	2000'	CKG	NOKTA
							PAPI	↑	→	113.6	
D17.0 DKI to MAP 6.6 5:39 4:24 3:58 3:18 2:50 2:28										R-028	

STRAIGHT-IN LANDING RWY25R			CIRCLE-TO-LAND		
MDA (H) 490' (469')			MDA (H)		
	ALS out	Max Kts			
A		100	680' (646')-1600m		
B	1200m	135	680' (646')-2800m		
C	RVR 1800m VIS 2000m	180	680' (646')-2800m		
D	RVR 1800m VIS 2000m	205	1040' (1006')-4800m		